

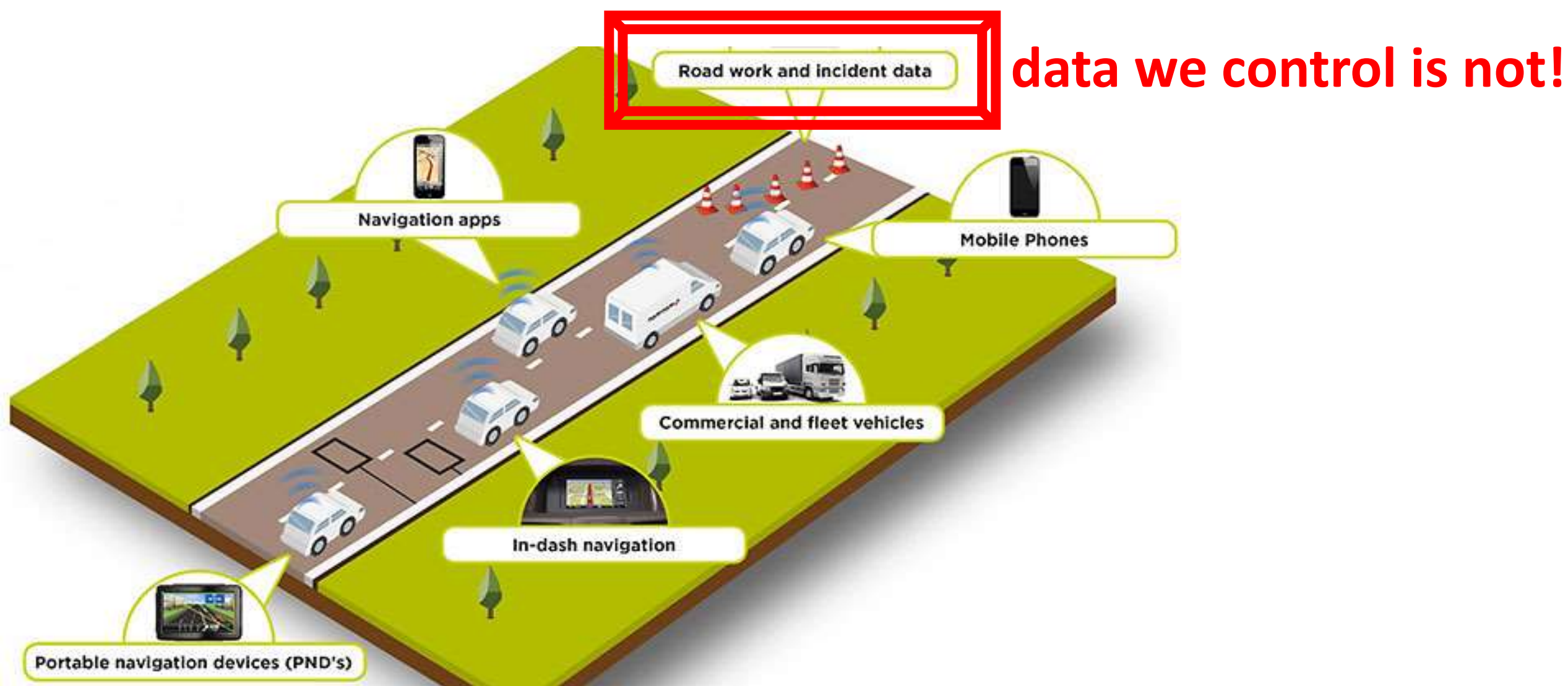
DELIVERING LIVE ROADWORKS INFORMATION

Daniel Anderton



The Challenge

→ Vehicles are better connected than ever before..



→ Live roadworks information exists but isn't reliably shared



...reliant on info from permits.
(upto 36hr data lag)



Only live info is user generated



We are the **only authoritative source** of this info!

→ Various communication channels are being used..



FOOTWAY REPAIRS 

FROM:

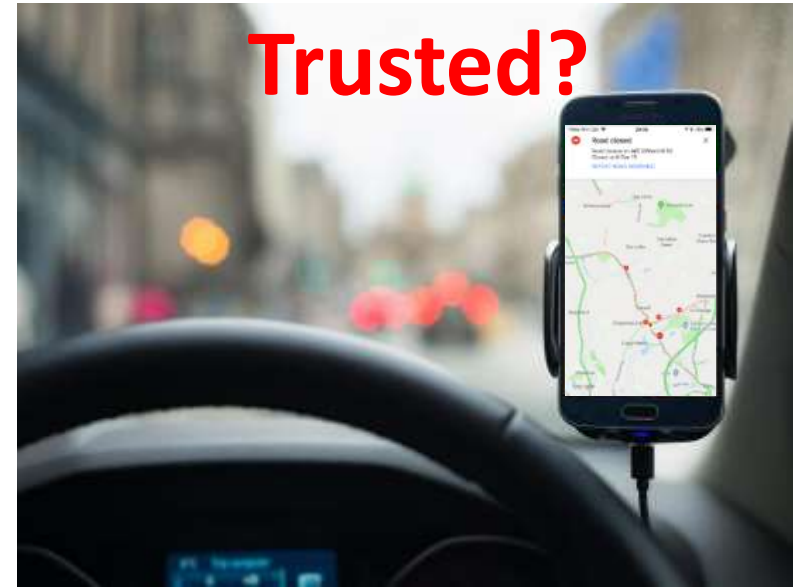
TO:

HOURS: 

hertfordshire.gov.uk/roadworks

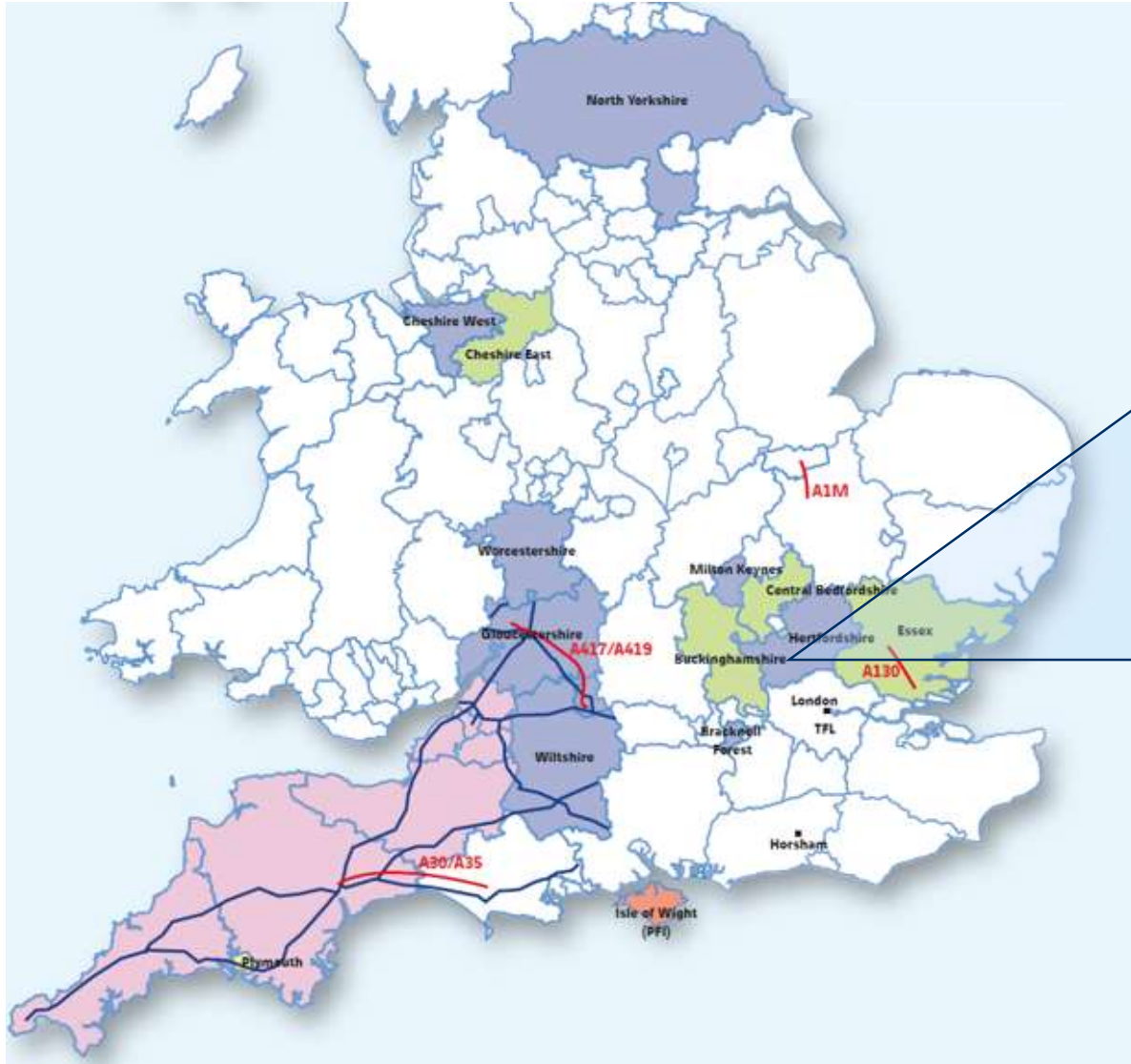
Search: 

Permit number:



Creating The Solution

→ Removing authority information boundaries...



 **RINGWAY**
Working on behalf of



→ Collaborating to solve real world problems

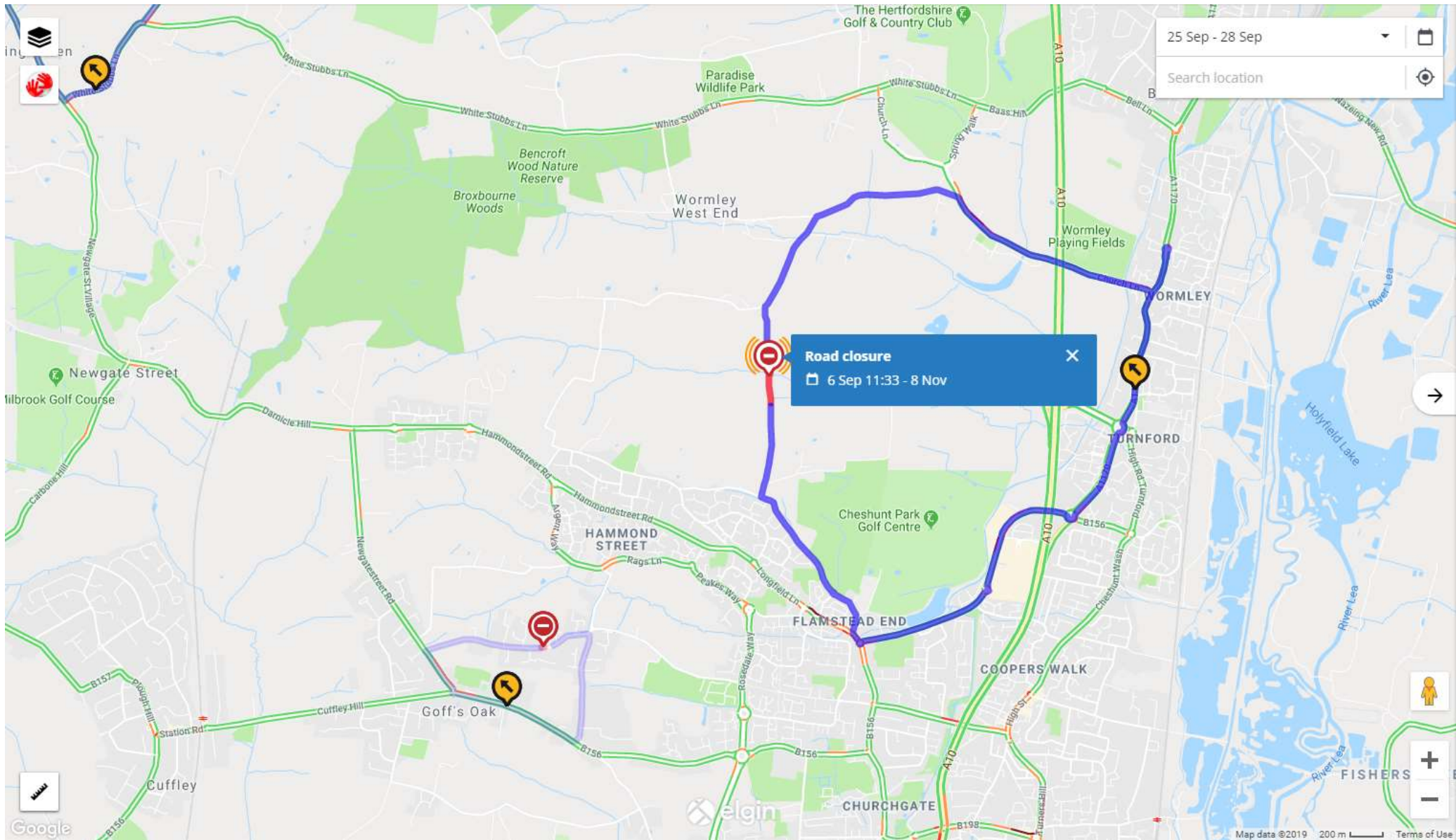


- Existing national roadworks / incidents dataset
- Established software solution with unique data feeds
- Links with Sat Nav Services (Google, TomTom & Here)



- Drive to improve roadworks communication
- Understand existing works management processes
- Drive to digitise activities and expand live data provision

→ Deliver live information that Sat Navs can **TRUST!**





Ensure monitoring is focussed in the right areas

Slow traffic X

🕒 Incident started 06:46

📍 A41

INFORMATION FOR ROAD USERS

AFFECTED ROAD LENGTH
823 meters

AFFECTED DIRECTION
Southeast

AVERAGE SPEED
20 mph

TRAFFIC DISRUPTION
Slow traffic

DESCRIPTION
Slow traffic

TIME ELAPSED SINCE LAST UPDATE
55 seconds ago

[Info](#)

Map data ©2019 Google 200 m Terms of Use

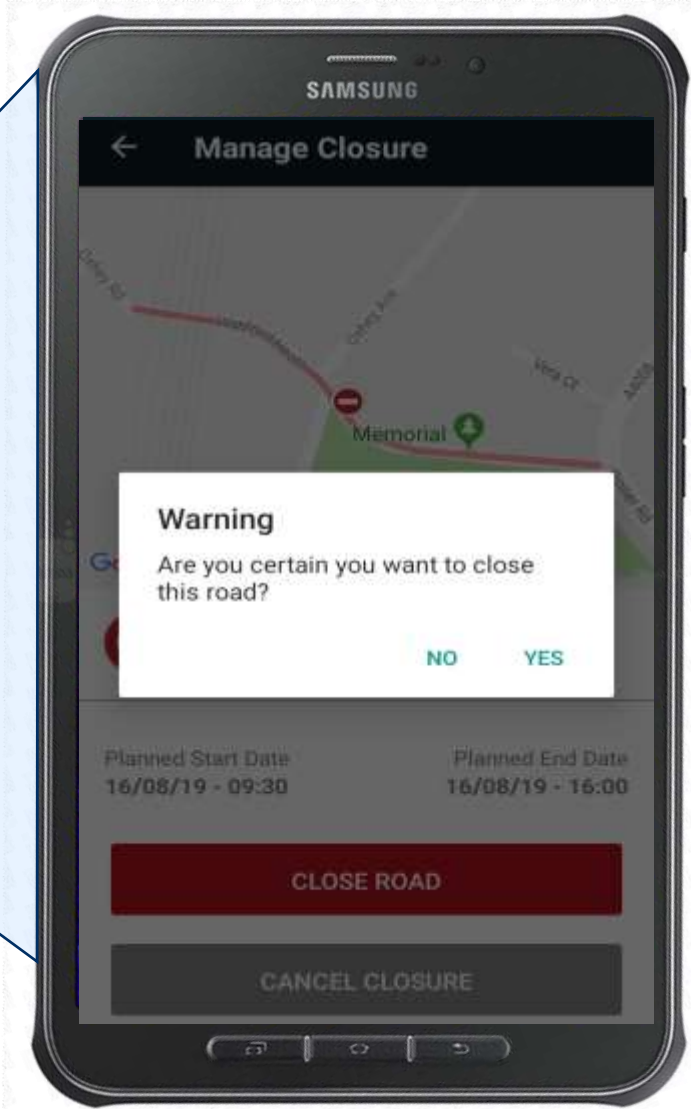
→ Live communication directly from the roadside...

By the person installing the traffic management!



→ Confirmed by the team on site..

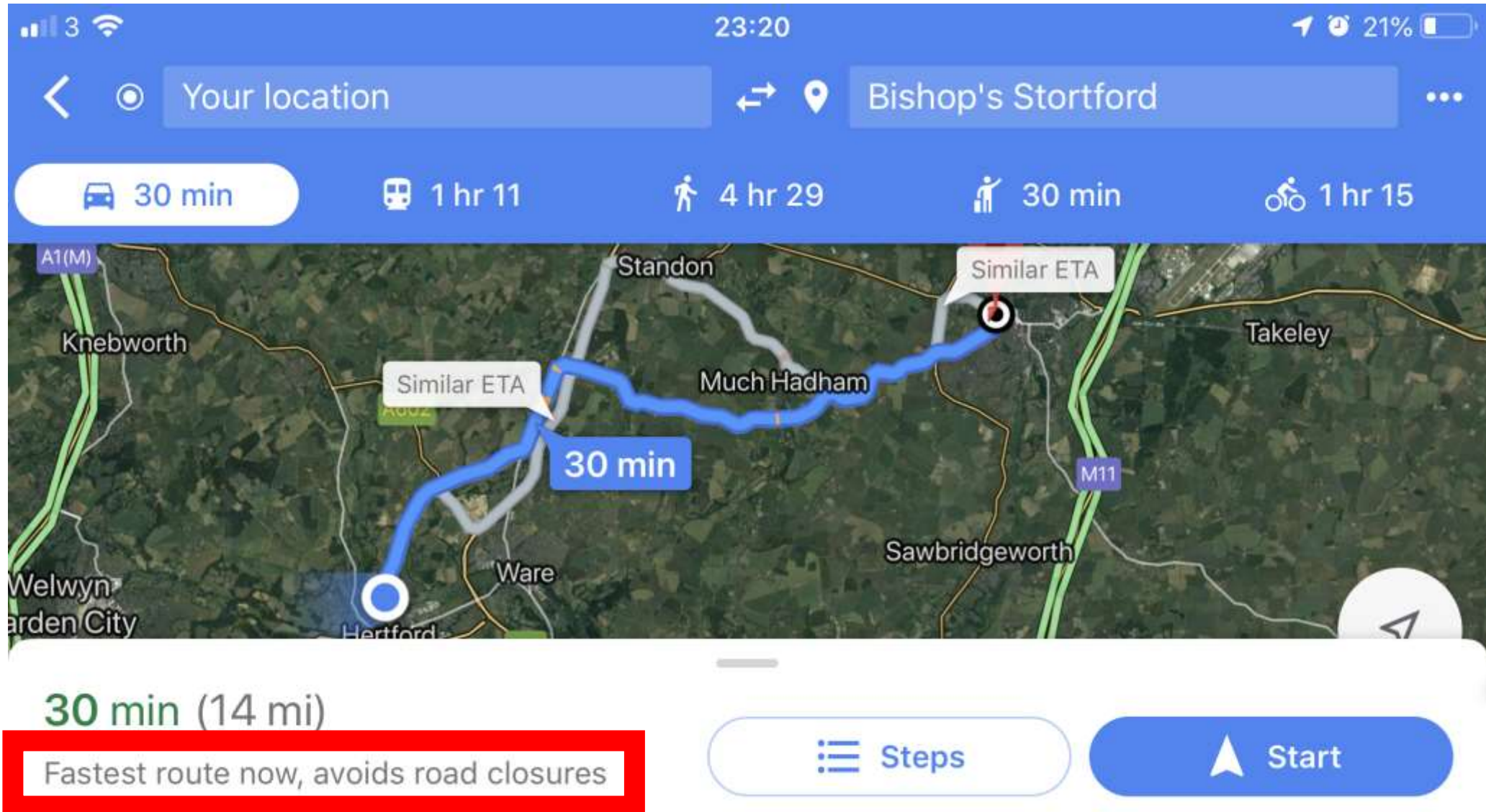
Road confirmed as **closed** at the roadside...



→ ...sent live to the Sat Nav services



→ ...to enable real time diversions



→ With the ability to monitor traffic disruption live

What's on this map

- Live incidents
- Live traffic
- Road closures and diversions
- Roadworks

Date filter:
Today

Customise my map

Stationary traffic
Incident started 14:29
Stortford Road

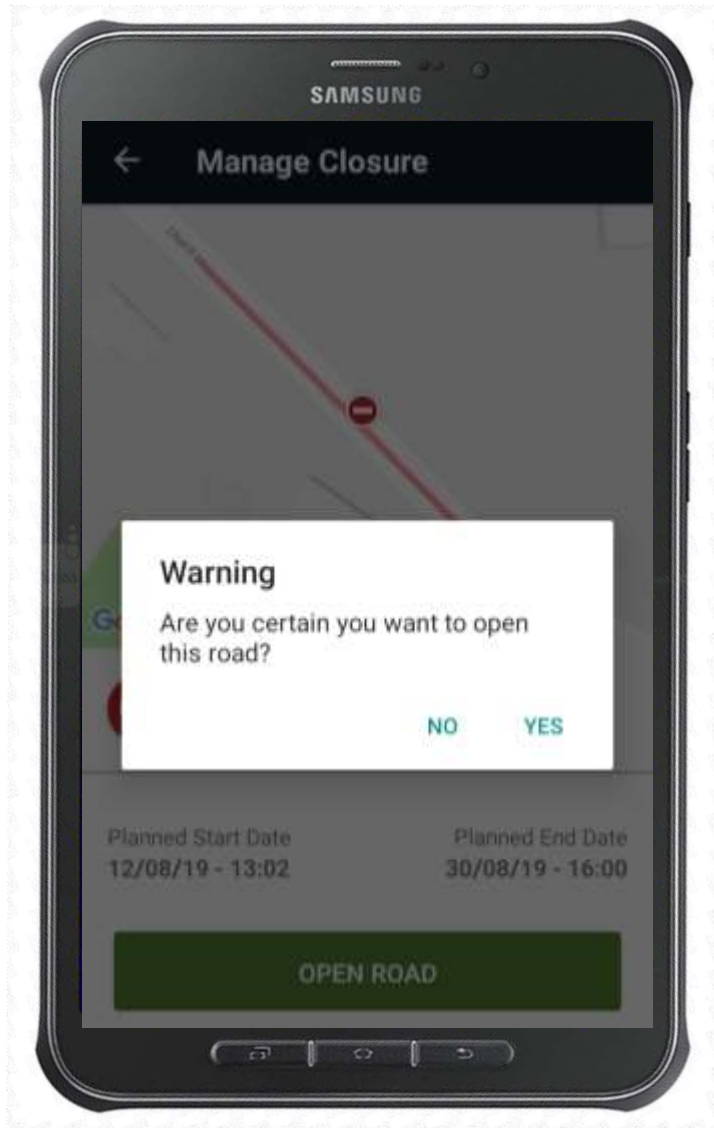
INFORMATION FOR ROAD USERS

AFFECTED ROAD LENGTH	981 meters
AFFECTED DIRECTION	West
TRAFFIC DELAY	5 minutes
AVERAGE SPEED	5 mph
TRAFFIC DISRUPTION	Stationary traffic
DESCRIPTION	Stationary traffic

TIME ELAPSED SINCE LAST UPDATE
13 seconds ago



Confirmation that the road has been reopened..



Road confirmed as **reopened** from the roadside

→ ...to avoid any unnecessary diversions!



elgin 

 Google Maps

TOMTOM 

here 

Live Road closure syndication to Sat Nav

- New communication channel live into vehicle navigation systems
- Only feed auto trusted by Sat Nav services (Google, TomTom)
- Unnecessary diversions cut by over 300hrs in 12 months
- Reduces conflict between drivers and operatives at roadworks

Live Network Monitoring

- Focussed network monitoring and delay interrogation
- Floating vehicle data - no roadside infrastructure required
- Scalable across authority boundaries

→ What next...

- DFT funding obtained for live roadworks data feed – CAVs and Buses
- Extend real time data provision to all TM types
- Drive this change across our industry
- Raise profile of the work we are doing



Department
for Transport



**THANK YOU
ANY QUESTIONS?**