

Survey Results - Week Commencing 15th June 2020

- * Results are based on a sample of LAs taken in the W/C 15th June 2020. The sample size varies each week and these results should be used as a general indication of levels and trends.
- * Responses represent best reasonable estimates at the date and time the survey is completed, and for some Local Authorities (LAs), may be reported with a week's lag.
- * Although this document is not in itself an official statistics release, it and the indicators within it, have undergone a proportionate level of quality assurance.
- * Percentages throughout this document may not sum to totals due to rounding

Collection Services



*Axis dates given as 'week commencing...'

- **Residual waste:** The vast majority (89%) of Waste Collection Authorities/Unitary Authorities (WCAs/UAs) responding to our survey in the W/C 15th June 2020 and who provide residual waste collections, report these to be operating as normal. This is an

increase from previous weeks. Most of the remainder reported experiencing minor disruption.

- **Recycling:** Three in four (**75%**) recycling collections are reported to be operating as normal in the W/C 15th June, while minor disruption is reported by **17%** of responding authorities, with **7%** reporting moderate disruption.
- **Food waste:** Almost three quarters (**72%**) of LAs responding to our survey in the W/C 15th June who provide food waste collections, report these to be operating as normal. **24%** of responding authorities continue to report some level of disruption, with **3%** of responding authorities reporting that the service is currently not available.
- **Garden waste:** Four in five (**80%**) garden waste collection services are reported to be operating as normal in the W/C 15th June, with this figure higher than the previous two weeks. A further **10%** report garden waste collection services to have minor disruptions.
- **Clinical waste:** Almost all (**99%**) clinical waste collections (generally ran in over four fifths of LAs represented in this survey) are reported to be continuing to operate as normal.
- **Commercial waste:** **66%** of LAs responding to our survey in the W/C 15th June report commercial collection services to be operating normally, an increase on the previous week, with another **14%** reporting operating with minor disruption. The rest of LAs responding in W/C 15th June are operating with either a moderate or a severe disruption, with an almost even split.
- **Bulky collections:** The overall situation for bulky collections has improved incrementally since the end of March. **4%** of bulky collections are reported to be unavailable in the W/C 15th June, similar to the results in W/C 8th June. The percentage of collections reported to be operating normally is **77%** in the W/C 15th June.
- **Street sweepings:** Roughly three in four (**77%**) street-sweeping and litter collection services provided by responding LAs are reported to be operating normally. **20%** are reported to be experiencing minor disruption.
- **65%** of **bring banks** are reported to be operating normally in the W/C 15th June by responding LAs. **25%** report this service to be experiencing minor disruption and **7%**, moderate disruption. **2%** report this service to be not available.
- The vast majority (**92%**) of **fly-tipping clearance** collections are reported to be operating as normal in the W/C 15th June. **8%** are reported to be in operation but with minor disruption.

	Operating normally	Minor disruption	Moderate disruption	Severe disruption	Service not available
Residual	89%	9%	2%	0%	0%

Recycling	75%	17%	7%	0%	1%
Food	72%	22%	2%	0%	3%
Garden	80%	10%	8%	0%	1%
Clinical	99%	0%	0%	0%	1%
Commercial	66%	14%	11%	9%	0%
Bulky	77%	12%	6%	1%	4%
Bring Banks	65%	25%	7%	2%	2%
Fly-Tip Clearance	92%	8%	1%	0%	0%
Street Sweeping	77%	20%	3%	1%	0%

Disposal Services

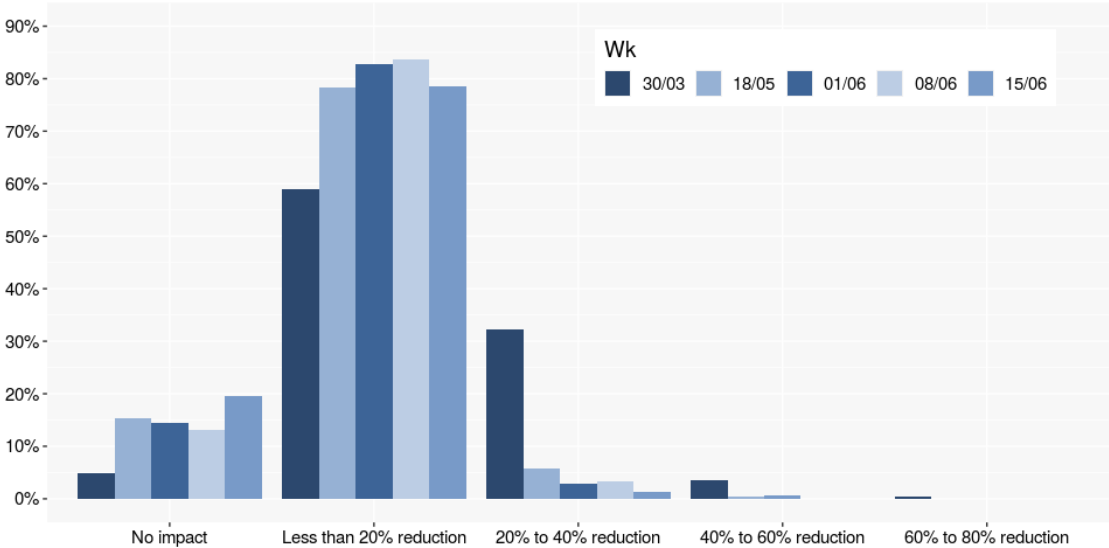


- Nearly all landfilling and Energy from Waste (EfW) disposal services utilised by LAs responding to our survey are reported to be operating as normal in the W/C 15th June 2020. This has been a relatively constant picture since the W/C 30th March.
- **Material Recycling Facilities (MRFs):** Greater levels of disruption have been consistently reported for recycling disposal services than residual by survey respondents, and this trend continues to be the case in the W/C 15th June. The vast majority of (85%) MRF services used by LAs responding to our survey are reported to be operating as normal, while 11% are reported to be operating but with minor disruption.
- **Transfer stations:** As in previous weeks, most transfer stations (93%) are reported to be continuing to operate without any disruption by LAs responding to our survey in the W/C 15th June.
- **Household Waste Recycling Centres (HWRCs):** In the W/C 15th June, around three in four (74%) responding LAs report minor or moderate levels of disruption among HWRCs that are in operation.

- **Mechanical Biological Treatment (MBT):** MBT services are reported to in normal operation for almost all (**93%**) of the relatively small proportion of responding authorities where this is a disposal service (just under a quarter). The remainder report experiencing minor disruption.
- **Open Windrow Composting (OWC):** OWC services are reported to be operating as normal by **99%** of responding LAs this week.
- The majority of (**96%**) **In-Vessel Composting (IVC)** and **Anaerobic Digestion (AD)** services are reported to be operating as normal by LAs responding to our survey in the W/C 15th June.

	Operating normally	Minor disruption	Moderate disruption	Severe disruption	Service not available
Landfill	98%	2%	0%	0%	0%
EFW	97%	3%	0%	0%	0%
MRF	85%	11%	4%	0%	0%
HWRC	23%	51%	23%	3%	0%
Transfer Stations	93%	6%	1%	0%	0%
MBT	93%	7%	0%	0%	0%
OWC	99%	0%	1%	0%	0%
IVC/AD	96%	4%	0%	0%	0%

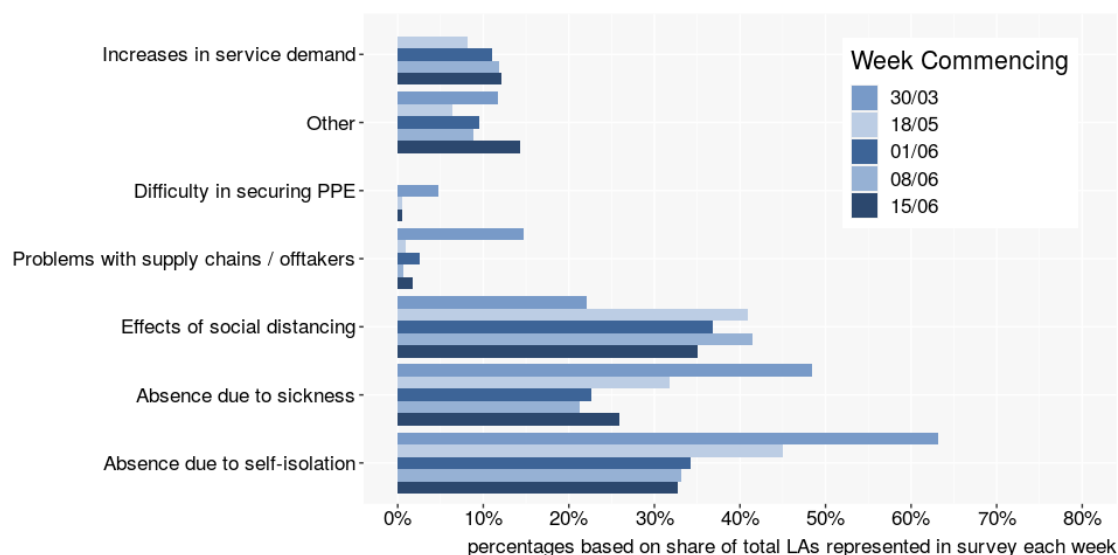
Staff Absence Levels



- In the W/C 15th June 2020, **19%** of LAs reported experiencing 'no impact' on operational staffing levels. This figure is five times greater than that reported in the W/C 30th March, and greater than in the last survey (W/C 8th June)
- **78%** of LAs reported a 'less than 20% reduction' on staffing levels, a little bit lower percentage than the week before.
- **1%** of LAs reported a '20-40% reduction' on staffing levels and 1% of LAs reported a greater than '20-40% reduction' in the W/C 15th June. Instances of the worst levels of disruption for staffing levels have continued to fall since the W/C 30th March.

Reasons for Service Changes

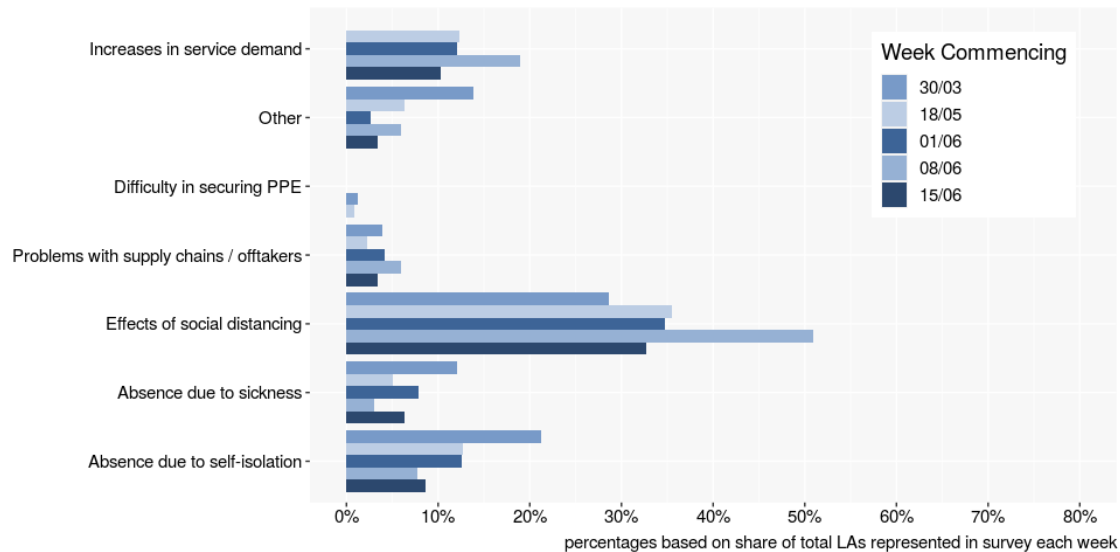
Collection



Percentages may sum to greater than 100%, as responding LAs can state more than one reason

- In the W/C 15th June, the greatest reported cause for disruption to collection services by responding LAs, where this is arising, is the **effects of social distancing**, highlighted by **35%** of LAs. This was followed by **absence due to self-isolation** as the second greatest reported cause for disruption, which was identified by **33%** of responding LAs in the W/C 15th June.
- **Absence due to sickness** is reported to be a cause for disruption to collection services by **26%** of LAs, a similar percentage to our previous week's survey.
- As in the two weeks prior, roughly one in eight (**12%**) LAs responding to our survey in the W/C 15th June continue to highlight **major increases in demand for services** as a cause for disruption to collection services.
- **Problems with offtakers** were identified by **2%** of LAs as a cause for disruption, with this figure having fallen incrementally each week. For those experiencing problems with offtakers, there was a mix of material streams impacted, co-mingled waste (cans/plastics/fibre/glass), mixed cans/plastics and fibres. Where a reason was reported for this issue it was limitations on volumes of waste being accepted by offtakers, with this causing LAs to be unable to place '15% - 25% of materials'.
- **'Other reasons'** for disruption were highlighted by **14%** of LAs. These include certain services not being fully functional, and changes in collection services recently implemented.
- **Difficulty securing PPE'** was highlighted by **1%** of LAs as a cause for disruption in the W/C 15th June.

Disposal



Percentages may sum to greater than 100%, as responding LAs can state more than one reason

- The **effects of social distancing** continue to be the greatest reported cause of disruption to disposal services among responding LAs, reported by **33%** in the W/C 15th June.
- **Major increases in service demand**, the next greatest reported reason, has been highlighted by **10%** of responding LAs as a cause for disruption. This figure is almost half of those reported in the W/C 8th June.
- **Staff absences due to self-isolation** is the third highest reported cause of disruption to disposal services, reported by **9%** of responding LAs in the W/C 15th June.
- **Staff absences due to sickness** has been highlighted by **6%** of responding LAs as a cause for disruption.
- **Problems with supply chains/off-takers** were highlighted by **3%** of respondents in the W/C 15th June. For those experiencing supply chain problems at the disposal stage, the waste streams impacted are co-mingled materials (cans/plastics/fibre and glass) and mixed cans/plastics. The main reason reported for this issue was limitations on volumes of waste being accepted, with LAs mainly being unable to place '15% - 25% of materials'.
- **Other reasons** were highlighted by **3%** of LAs.

Changes in Waste Arisings

(Excluding Withdrawn Services)

	+100% increase	50-100% increase	20-50% increase	0-20% increase	No impact	0-20% decrease	20-50% decrease	50-100% decrease
Residual	1%	4%	25%	57%	12%	1%	1%	1%
Recycling	2%	8%	26%	49%	12%	2%	0%	1%
Food	0%	3%	14%	45%	19%	14%	1%	3%
Garden	3%	10%	21%	34%	19%	10%	2%	1%
Clinical	0%	0%	0%	8%	90%	1%	2%	0%
Commercial Waste	0%	0%	0%	1%	8%	20%	53%	18%
Bulky	2%	2%	9%	19%	47%	14%	7%	0%
Bring Banks	2%	4%	4%	41%	35%	6%	3%	6%
Fly-Tip Clearance	0%	4%	11%	34%	40%	8%	1%	2%
Street Sweepings/ Litter	0%	1%	5%	14%	58%	18%	1%	3%
HWRCs	0%	3%	5%	17%	7%	20%	41%	7%

- **Residual:** **87%** of LAs represented in our survey in the W/C 15th June continue to report higher than usual residual waste arisings. **57%** reported increases to be in the region of '0-20% greater than normal', **25%** reported increases to be in the region of '20-50% greater than usual', **4%** reported waste arising levels to be '50-100%' greater than usual, and **1%** reported increases of over 100%.
- **Recycling:** The vast majority (**85%**) of LAs responding to our survey in the W/C 15th June reported recycling waste arisings to be greater than usual, with over half of those LAs reporting increases to be in the region of '0-20%'.
- Higher than usual arisings of collected **food** and **garden waste** are reported by **62%** and **68%** of LAs, respectively. Around a fifth (**19%**) report arisings to be about the same for both the food waste stream and for garden waste
- **Almost half (47%)** of LAs report **bulky waste** collection tonnages to be 'about the same' this week, with **32%** reporting collected tonnages to be greater than usual, while **21%** report less than usual collected tonnages.

- **The vast majority (90%)** of LAs continue to report collected **clinical waste** arisings to be at a similar level to what is typical.
- Over half of authorities (**51%**) reported a greater than usual level of collected waste from **bring banks**.
- **Fly-tip clearance:** Around half of five responding LAs (**49%**) report greater than usual volumes of collected fly-tipped waste, which is lower than the two previous weeks. **34%** report increases to be in the region of '0-20%' and **11%** '20-50%'. Two in five (**40%**) respondents reported collected tonnages were as typical.
- **Commercial:** **91%** of respondents highlighted a reduction in collected commercial waste arisings relative to usual. This is a larger percentage than the previous week.
- **Street sweepings/Litter:** Almost three in five of respondents (**58%**) report arisings to be at a similar level to what is typical, with another **22%** reporting tonnages being lower than normal, with a '0 – 20%' decrease being the largest percentage decrease.
- **HWRCs:** Only (**7%**) of responding LAs report collected tonnages at their HWRCs to be typical. Around seven in ten responding LAs (**68%**) report a reduction in collected tonnages, with a '20-50%' reduction being the largest reduction reported.