



**Nottingham**  
**City Council**

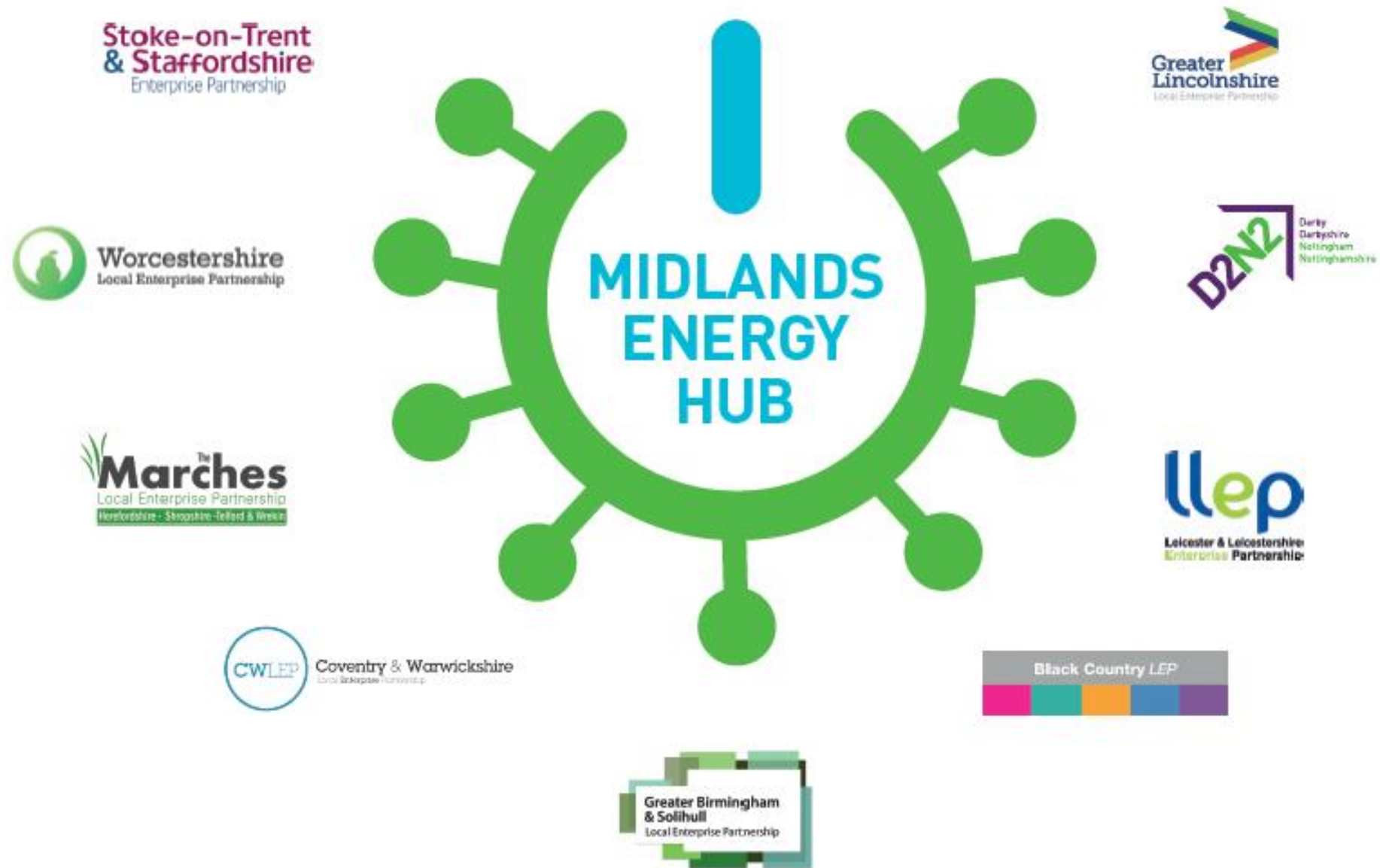
Energy  
Services



# ADEPT A Local and Regional approach to the Energy Transition

Midlands Energy Hub Lead  
Michael Gallagher - Regional Energy Projects Manager  
Nottingham City Council





Energy Services & Midlands Energy Hub supports organisations to switch to renewable and low carbon energy solutions

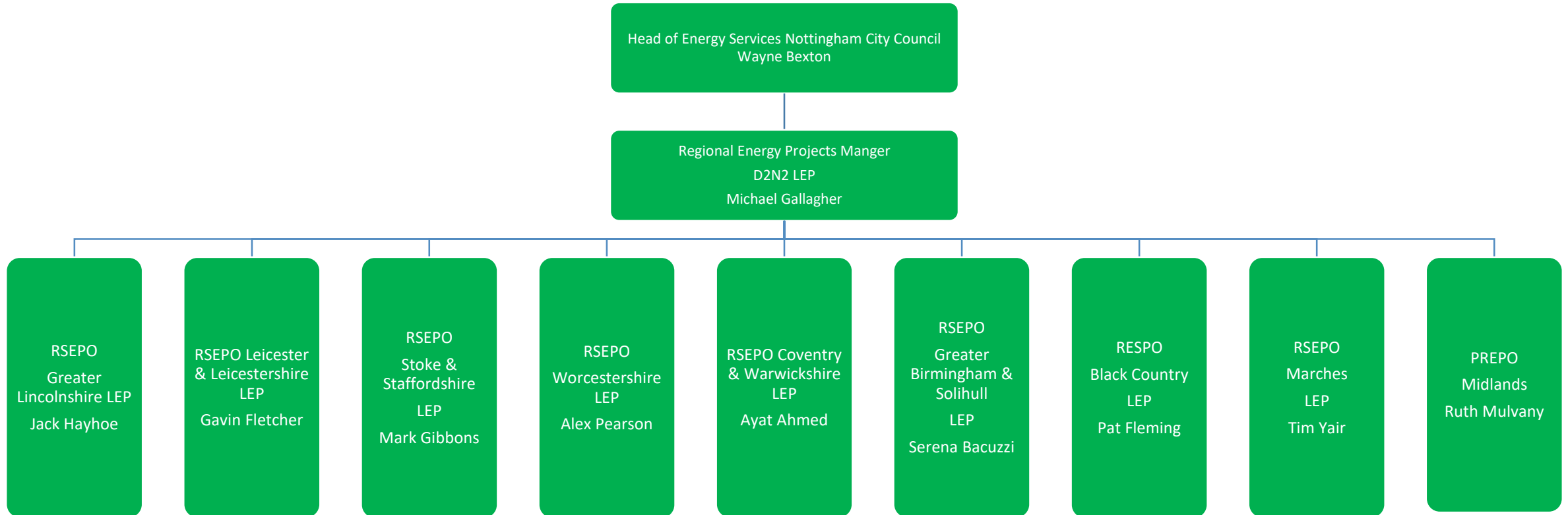


**Nottingham**  
City Council

**Energy  
Services**



# The Midlands Energy Hub Regional Energy Team



Energy Services & Midlands Energy Hub supports organisations to switch to renewable and low carbon energy solutions

[customerservices@energyservices-ncc.gov.uk](mailto:customerservices@energyservices-ncc.gov.uk) | 0115 955 6677 | [www.energyservices-ncc.co.uk](http://www.energyservices-ncc.co.uk)

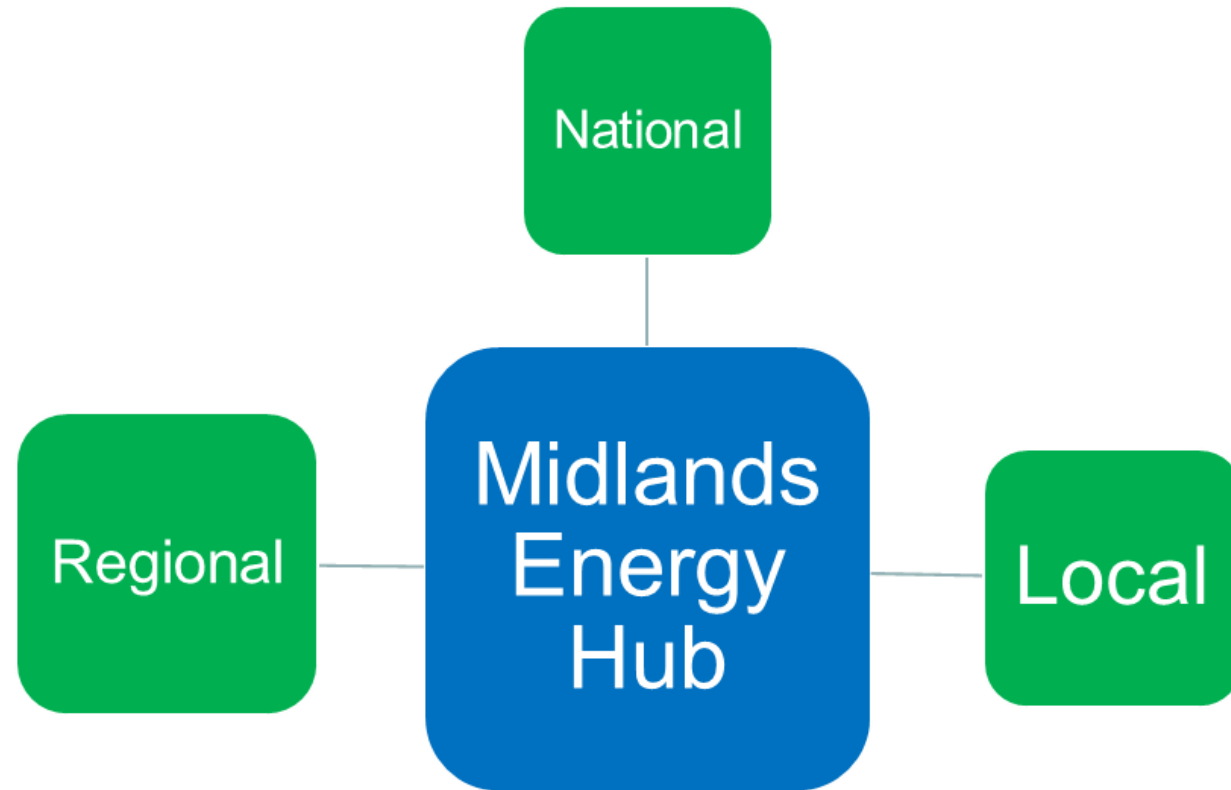


**Nottingham**  
City Council

**Energy  
Services**



# The Midlands Energy Hub Approach



Energy Services & Midlands Energy Hub supports organisations to switch to renewable and low carbon energy solutions

[customerservices@energyservices-ncc.gov.uk](mailto:customerservices@energyservices-ncc.gov.uk) | 0115 955 6677 | [www.energyservices-ncc.co.uk](http://www.energyservices-ncc.co.uk)



**Nottingham**  
City Council

**Energy  
Services**



# Example Projects & Schemes

- D2 Grids – Mine Water Heating Feasibility
- District Heating
- 5 – 8 MWp Solar Farm
- EV charge point provision





# Rural Community Energy Fund

- Midlands Energy Hub administer £1.8 million RCEF fund for the Midlands.
  - Grants available for rural, community lead projects
  - Stage 1 feasibility grants < £40,000
  - Stage 2 grants < £100,000 for business development and planning of feasible schemes.
- RCEF available to communities in England that represent:
  - A rural community of fewer than 10,000 residents; or
  - A community with more than 10,000 residents, but are within a local authority area which is classified by the Office of National Statistics as predominantly rural



# Collaborative, Positive Action

*“Energy does not respect Local Authority boundaries”*

**Ambitious targets require action, co-investment & collaboration**

Public and Private support is needed:

- Take ownership of key challenges
  - Internal i.e. estates, behavioural change
  - Area Based i.e. transport and air quality
- Lead by example and support each other
- Build capacity
- Share challenges
- Develop tangible, deliverable action plans



Districts/Boroughs

City

County

Action Plans

Action Plan

Action Plans

Combined Action Plans showing connections and interdependencies

Collaboration  
Joint Investment  
Leveraging of Private investment

Energy Services & Midlands Energy Hub supports organisations to switch to renewable and low carbon energy solutions

[customerservices@energyservices-ncc.gov.uk](mailto:customerservices@energyservices-ncc.gov.uk) | 0115 955 6677 | [www.energyservices-ncc.co.uk](http://www.energyservices-ncc.co.uk)



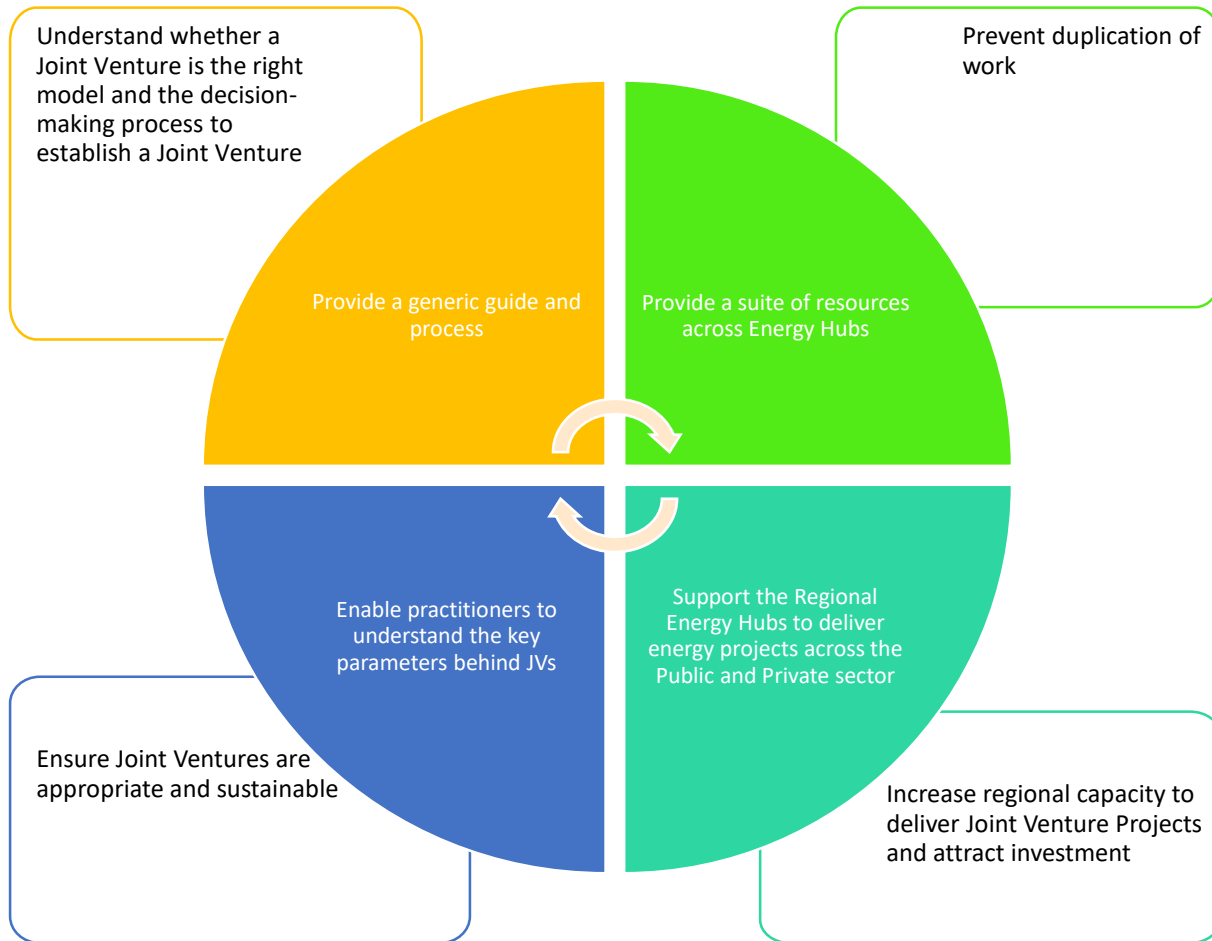
Nottingham  
City Council

Energy  
Services





# Joint Venture - Overview



Provides a guide to:

- Securing project investment
- Enabling project development
- Enhancing and accelerating delivery of wide range of energy infrastructure projects
- Integration of energy projects (generation, grid constraints, mobility, heat and in particular, digital solutions)

# Nottingham – 2028

**Nottingham has pledged to be the UK's first carbon neutral city by 2028**

Progress so far:

- 41% reduction in CO2 emissions from 2005 levels in 2017
  - Original 2020 target of reducing CO2 emissions was by 26%.
- Incorporating population increases, the city has reduced its per person emissions by almost half.
- In 2017, the city emitted 1.17 million tonnes of CO2, equivalent to 6 billion miles driven by the average new car in the UK.
- Emissions today are evenly split across transport, business and domestic sources.
- Nottingham 2028 Carbon Neutral Charter



# Nottingham in action

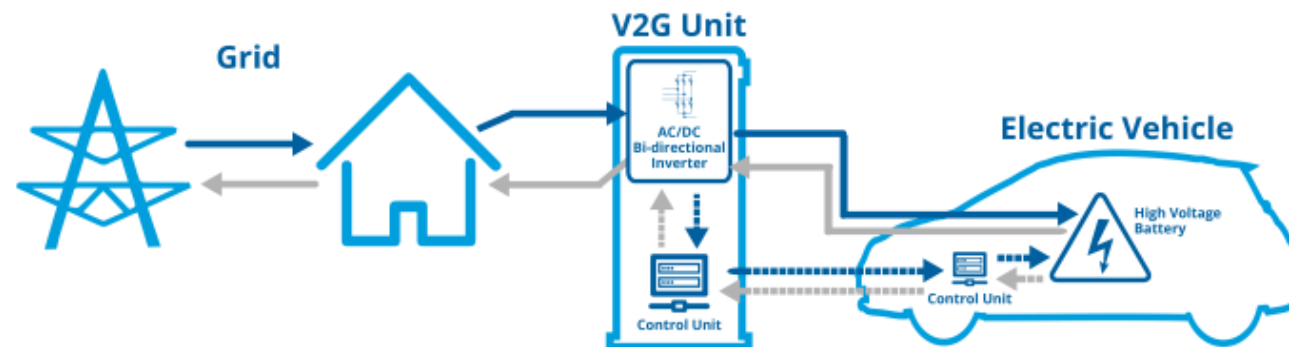


**Solar PV**

**Energiesprong**

**Vehicle to Grid**

**District Heating**



Energy Services & Midlands Energy Hub supports organisations to switch to renewable and low carbon energy solutions

[customerservices@energyservices-ncc.gov.uk](mailto:customerservices@energyservices-ncc.gov.uk) | 0115 955 6677 | [www.energyservices-ncc.co.uk](http://www.energyservices-ncc.co.uk)



**Nottingham**  
City Council

**Energy**  
Services



# SCATTER - Setting City Area Targets and Trajectories for Emissions Reduction

Originally created through a BEIS funded project between GMCA, the Anthesis Group and the Tyndall Centre, SCATTER is now being developed to offer an accessible, visually appealing and highly usable web-service

Setting City Area Targets and Trajectories for Emissions Reduction - SCATTER - was created to:

- offer the ability to report on authority wide emissions to carbon reporting frameworks
- inform the setting of carbon reduction targets
- to understand potential pathways to meeting commitments in line with national and international objectives.





# SCATTER -Access

- Free to use
- Licenced for UK LAs
- Linked to valid .gov.uk email
- Login and user profile
- Multiple accounts per LA

<https://scattercities.com>

<https://www.youtube.com/watch?v=cGqpzjlfr1U>

[Jonathan.ward@nottinghamcity.gov.uk](mailto:Jonathan.ward@nottinghamcity.gov.uk)





**For further information please contact:**

**Michael Gallagher**

**Email:** [Michael.Gallagher@nottinghamcity.gov.uk](mailto:Michael.Gallagher@nottinghamcity.gov.uk)

**Tel:** 07864 969755

Energy Services & Midlands Energy Hub supports  
organisations to switch to renewable and low carbon energy solutions



**Nottingham**  
**City Council**

**Energy**  
**Services**

