

Everyone should feel safe

Anne Shaw

Violence Against Women and Girls Transport Champion

Managing Director Transport for West Midlands

Background

The evidence

- 90% of **unwanted** sexual behaviour on London transport goes unreported.
- Peak travel times coincide with **peak harassment times**.
- **More than half of women in London** are victims of sexual harassment on Tube, trains and buses.
- **62% women** are scared walking in multi-storey car parks, **60% are scared** waiting on train platforms.
- **49% are scared waiting** at the bus stop.
- **59% are scared walking home** from a bus stop or station.

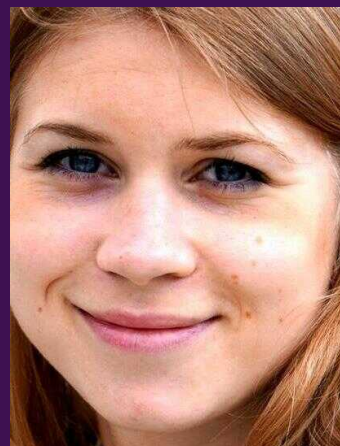
Everyone should feel safe



Julia James



Bibaa Henry & Nicole
Smallman



Sarah Everard



Sabina Nessa

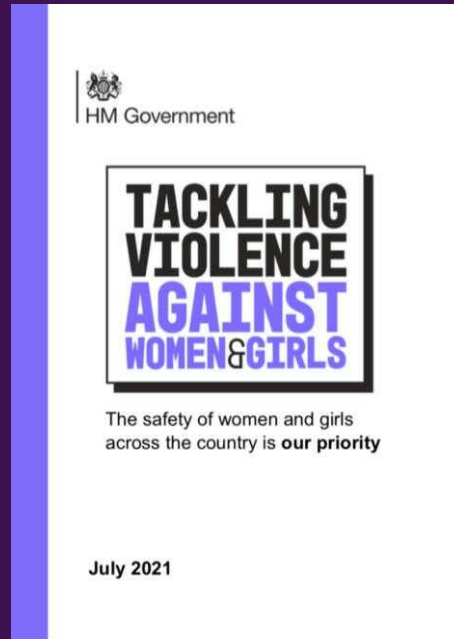
**TACKLING
VIOLENCE
AGAINST
WOMEN & GIRLS**

Everyone should feel safe



- ***180,000 responses***
- ***Charities, Academics, Frontline professionals***
- ***Victims***

Everyone should feel safe



“Every day, women and girls have bad experiences at school, at work on buses and trains, on the street, and even at home.”

Everyone should feel safe



Nimco Ali OBE

*Independent Adviser on Tackling
Violence Against Women and
Girls*

“Women and girls in the UK and around the world are facing a parallel pandemic of violence committed against them – mostly by men or because of patriarchal structures.”

Everyone should feel safe



Laura Shoaf



Anne Shaw

Violence Against Women and Girls Transport Champions

Everyone should feel safe

The barriers

- Streetscene
- Roads, design and the feeling of being unsafe in public spaces.
- Affordability of public transport.
- Patterns of work and the associated challenges.
- Male behaviours in public spaces and its impacts.
- Design - of active travel infrastructure and its influence.

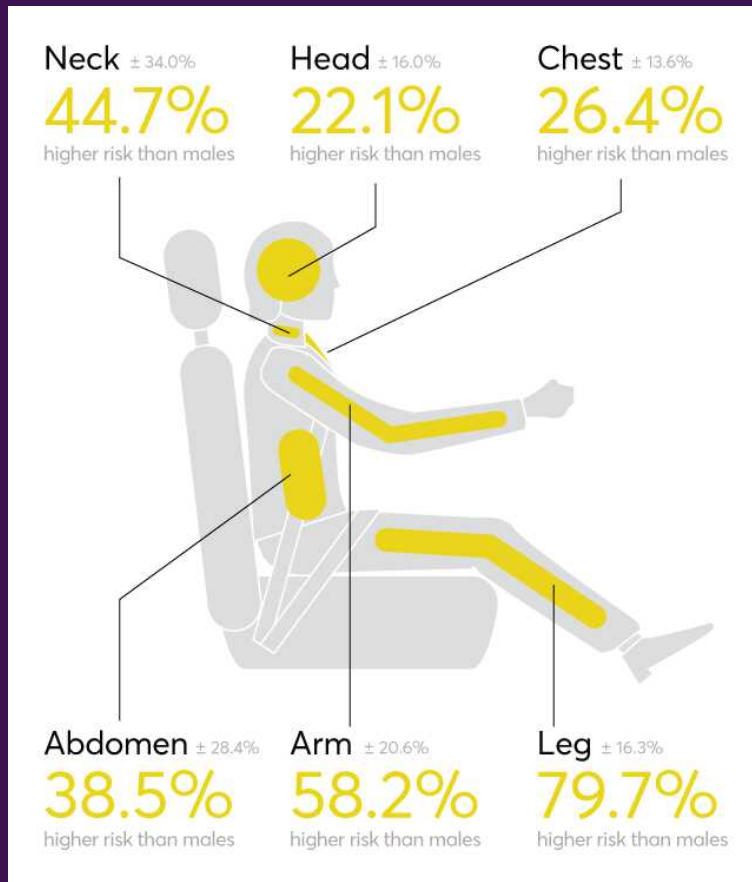
Everyone should feel safe

The barriers – patterns of travel

- 11% men, compared with 42% women, work part-time. (ONS, 2015)
- The gender pay gap in the UK is 17.3% (ONS, 2019)
- Women only account for 35% registered car keepers in the UK. (DfT, 2018)
- A third more women than men travel by bus, and a third more men travel by rail. Male behaviours in public spaces and its impacts. (ONS, 2017)
- In the morning peak, 93% men but only 85% women go direct from home to work. (DfT, 2014)

Everyone should feel safe

Design - Different life chances



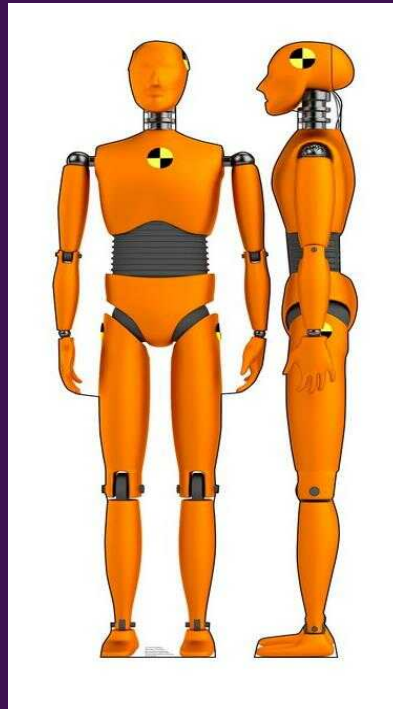
When women are involved in a car accident, they are 47% more likely to be seriously injured than men, and 17% more likely to die.

NHTSA, 2013

Everyone should feel safe

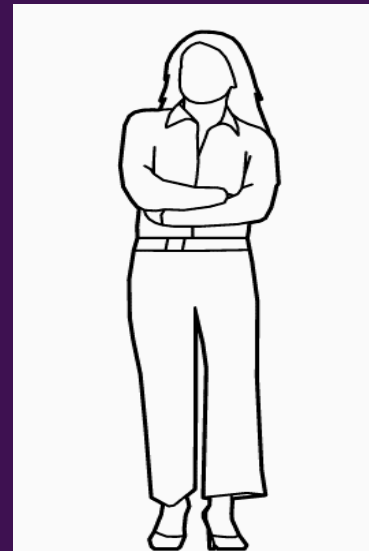
Design - Different life chances

1.77m (5'9'')



76kg

1.52m (5'3'')



70kg

Everyone should feel safe

Design - Considerations



1/3 more women
travelled by bus
than men



Women make a greater
number of journeys per
weekday compared to men



Women are 25%
more likely to
trip-chain than men

Everyone should feel safe



Why does it matter to me?

Economy

Lack of access to transport and safety fears reduce women's participation in the economy by 16.5%.

Access

UK survey showed 19% respondents had turned down a job due to the quality of the bus service.

Needs

Women are also more likely to report difficulty in accessing healthcare than men.



Everyone should feel safe

What does it mean to us as a sector?

Surveys found that women wanted:



safer night buses



reliable taxis and
mini-cabs especially
at night



good lighting and
visibility, and CCTV
cameras



staffed stations



more and better
trained staff on
buses and trains,
especially at non-
peak times



50% of women
surveyed said they
often changed
mode of travel to
whether there is
street lighting.



61% of males
surveyed said they
never changed
their route due to
anxiety or fear.



Everyone should feel safe

What does it mean to us as a sector?



Improved security and accessibility for all, including gender and ethnic minorities who fear personal attacks and language difficulties.



Economic benefit – 13% working age respondents to a survey said they had decided not to apply for a particular job in the last 12 months because of transport problems.



Improved safety and CCTV will reduce vandalism or littering issues, hence eliminating costly repairs.



Education- 40% young people in rural areas said that transport issues influenced their decisions about post-16 education.



Health care accessibility – 69% of missed maternity care appointments were due to transport or transport-related factors.

Everyone should feel safe

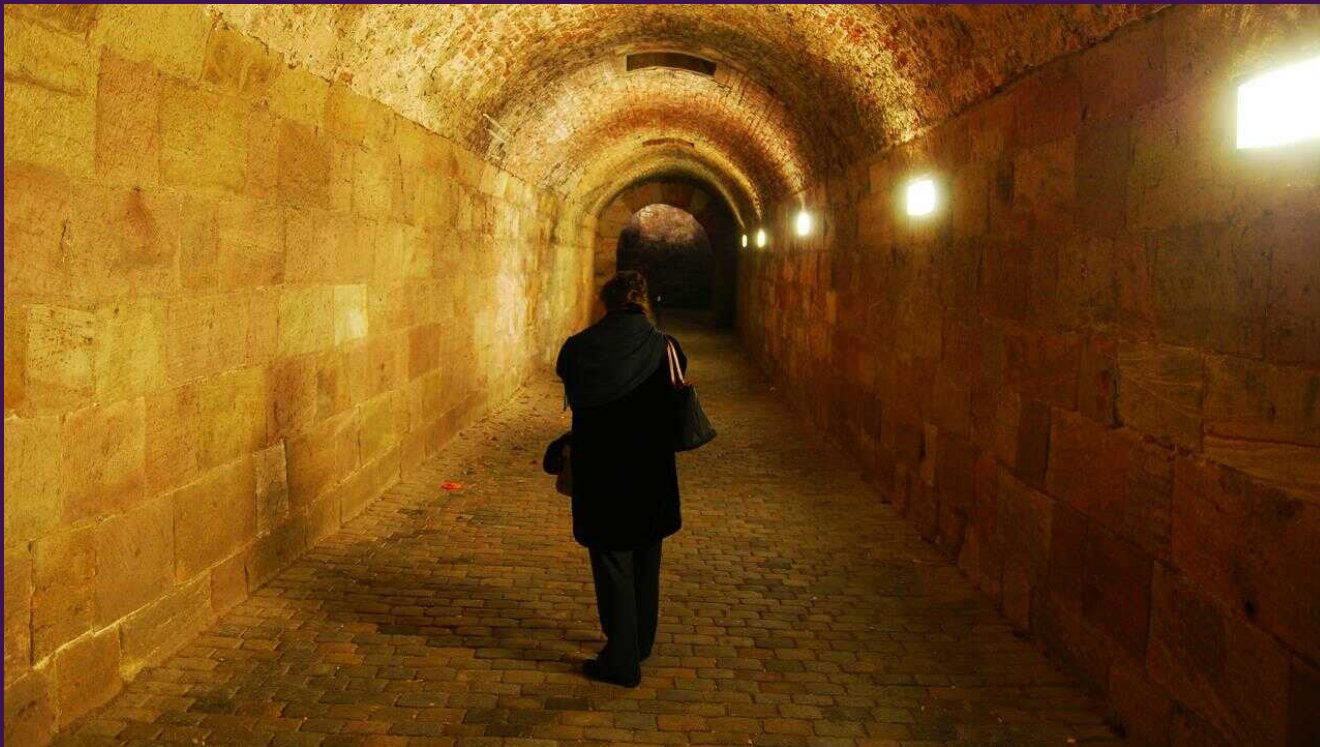
THINK Differently.

DESIGN Differently.

Everyone should feel safe

THINK Differently.

DESIGN Differently.



Everyone should feel safe

THINK Differently.

DESIGN Differently.



Everyone should feel safe

THINK Differently.

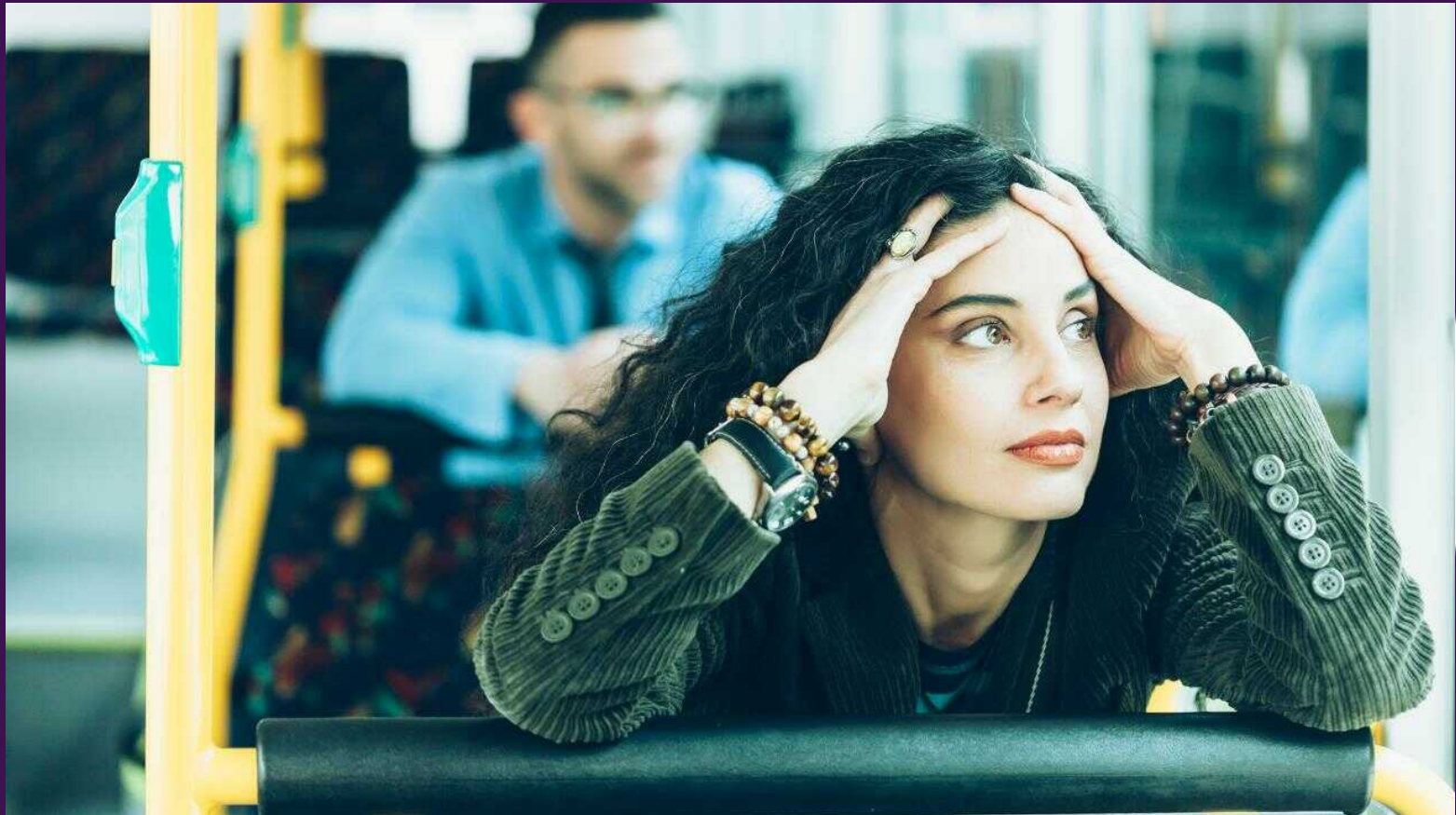
DESIGN Differently.



Everyone should feel safe

THINK Differently.

DESIGN Differently.



Anne Shaw

Violence Against Women and Girls Transport Champion

Managing Director Transport for West Midlands

anne.shaw@tfwm.org.uk