

## Local Authority Waste Survey Results: week commencing 15 March 2021

- Results are based on a voluntary sample of Local Authorities (LAs) taken in the week commencing 15 March 2021. The sample size varies for each survey.
- Respondents are asked to compare services with a ‘normal’ period having regard to usual seasonal variations.
- Responses represent best reasonable estimates at the date and time the survey is completed, and for some Local Authorities (LAs), may be reported with a week’s lag.
- Percentages throughout this document may not sum to totals due to rounding.

### Contents

|   |    |
|---|----|
| Collection Services .....                                     | 2  |
| Collection: comparison with previous weeks.....               | 2  |
| Collection: most recent week .....                            | 3  |
| Collection: reasons for service changes .....                 | 5  |
| Disposal Services .....                                       | 6  |
| Disposal: comparison with previous weeks.....                 | 6  |
| Disposal: most recent week.....                               | 7  |
| Disposal: reasons for service changes .....                   | 9  |
| Staff Absence Levels .....                                    | 10 |
| Changes in Waste Arisings (excluding withdrawn services)..... | 11 |
| Waste arisings: comparison to previous weeks .....            | 11 |
| Waste arisings: most recent week.....                         | 12 |

# Collection Services

## Collection: comparison with previous weeks



\*Dates given as 'week commencing...'

## Collection: most recent week

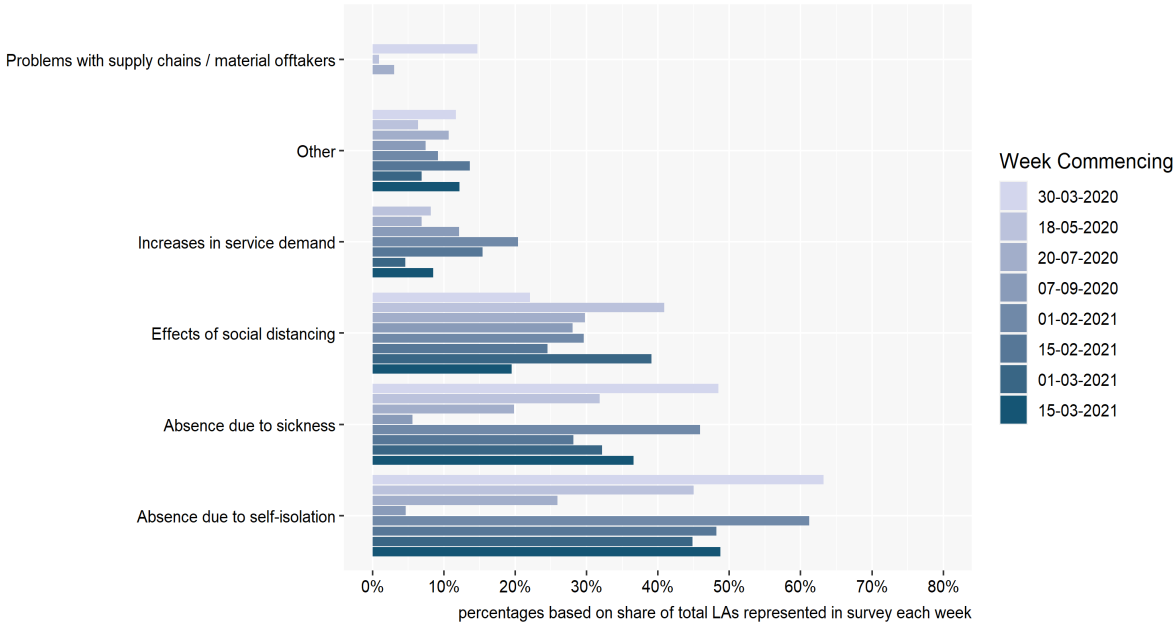
|                   | Operating normally | Minor disruption | Moderate disruption | Severe disruption | Service not available |
|-------------------|--------------------|------------------|---------------------|-------------------|-----------------------|
| Residual          | 78%                | 21%              | 1%                  | 0%                | 0%                    |
| Recycling         | 76%                | 22%              | 1%                  | 0%                | 0%                    |
| Food              | 76%                | 24%              | 0%                  | 0%                | 0%                    |
| Garden            | 83%                | 15%              | 0%                  | 0%                | 2%                    |
| Clinical          | 98%                | 2%               | 0%                  | 0%                | 0%                    |
| Commercial        | 95%                | 5%               | 0%                  | 0%                | 0%                    |
| Bulky             | 79%                | 21%              | 0%                  | 0%                | 0%                    |
| Street Sweeping   | 82%                | 18%              | 0%                  | 0%                | 0%                    |
| Bring Banks       | 90%                | 8%               | 2%                  | 0%                | 0%                    |
| Fly Tip Clearance | 90%                | 7%               | 3%                  | 0%                | 0%                    |

- Residual waste:** 78% of Waste Collection Authorities/Unitary Authorities (WCAs/UAs) responding to our survey in the in the W/C 15 March 2021 providing residual waste collections, report these to be operating as normal. This is similar to the 79% reported in the previous survey W/C 1 March. The majority of the remainder (21%) report minor disruptions.
- Recycling:** 76% recycling collections provided are reported in the W/C 15 March 2021 by responding authorities to be operating as normal, up from 69% in the previous survey. This is similar to the 77% in the W/C 1 March. The level of minor disruptions has increased since the last survey (from 10% to 22%), but the level of moderate disruption has fallen (from 13% to 1%).
- Food waste:** A total of 76% authorities responding to our survey and who provide food waste collections, report these to be operating as normal. This is up from 65% in the W/C 1 March 2021. The remainder report minor disruptions.
- Garden waste:** 83% of garden waste collection services are reported to be operating as normal in the W/C 15 March 2021. This is a significant increase from 74% in the last survey. Moderate disruption has dropped down from 12% to 0%, and minor disruption has dropped from 25% to 15%. Nevertheless, 2% of services are still unavailable, the same as the last survey.
- Clinical waste:** Consistently reported to be the least disrupted collection service, almost all (98%) clinical waste collections are reported to be operating as normal in

the W/C 15 March 2021. In the last survey, all services were reported to be operating as normal.

- **Commercial waste:** In W/C 15 March 2021, 95% of authorities report disruption to commercial waste collections, down from 100% that reported no disruption in the previous survey.
- **Bulky collections:** 79% of LAs report that bulky waste collections are operating as normal in the W/C 15 March 2021, with the remainder reporting minor levels of disruption. This is a small increase from 76% that reported to be operating as normal in the previous survey. No authorities report services to be currently unavailable, which is an improvement from 1% in the last survey.
- **Street sweepings:** More than four out of five (82%) of responding authorities in the W/C 15 March 2021 report that street-sweeping and litter collection services are operating as normal. A slight drop compared to the previous survey (85%).
- **Bring banks:** Nine of out ten (90%) responding LAs report bring banks services they provide to be operating as normal in the W/C 15 March 2021. This is a decrease from 94% reported in the last survey.
- The vast majority (90%) of **fly-tipping clearance** collections are reported to be operating as normal. 7% are reported to be in operation, but with minor disruption. In the previous survey (W/C 1 March) these levels were 84% and 16% respectively.

## Collection: reasons for service changes



- In the W/C 15 March 2021, the greatest reported cause for disruption to collection services by 49% of responding authorities is formed by the **absence due to self-isolation**. This is a slight increase compared to 44% of responding LAs in the W/C 1 March.
- **Staff absence due to sickness** form the second largest cause for disruption to collection services, reported by 37% of LAs responding in W/C 15 March 2021. This is an increase compared to the last survey (31%). In the last survey, this factor was the third highest cause for disruption.
- **The effects of social distancing** is reported by 20% of LAs. This is down from 38% in the previous survey. In the last survey, this factor was the second highest cause for disruption.
- **Major increases in demand for services** is experienced by 9% of responding authorities in the W/C 15 March 2021. This is an increase from 4% in the W/C 1 March.

# Disposal Services

## Disposal: comparison with previous weeks



\*Dates given as 'week commencing...'

**Disposal: most recent week**

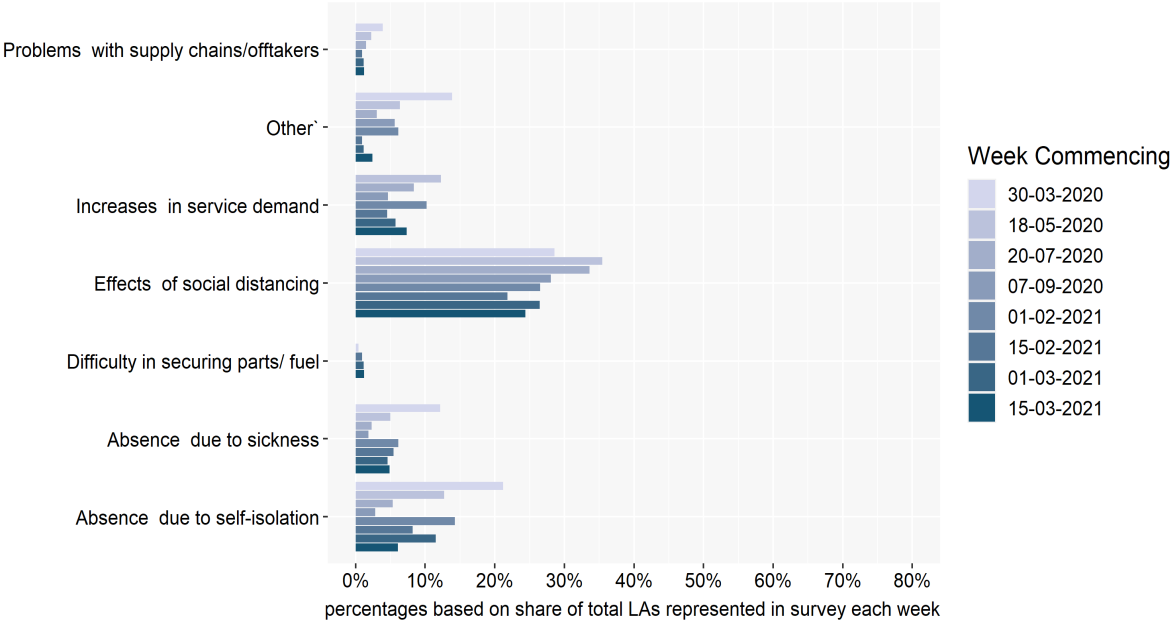
|                   | Operating normally | Minor disruption | Moderate disruption | Severe disruption | Service not available |
|-------------------|--------------------|------------------|---------------------|-------------------|-----------------------|
| Landfill          | 100%               | 0%               | 0%                  | 0%                | 0%                    |
| EfW               | 93%                | 7%               | 0%                  | 0%                | 0%                    |
| MRF               | 85%                | 11%              | 4%                  | 0%                | 0%                    |
| HWRC              | 24%                | 62%              | 14%                 | 0%                | 0%                    |
| Transfer Stations | 93%                | 3%               | 3%                  | 0%                | 0%                    |
| MBT               | 100%               | 0%               | 0%                  | 0%                | 0%                    |
| OWC               | 92%                | 4%               | 0%                  | 0%                | 4%                    |
| IVC/AD            | 100%               | 0%               | 0%                  | 0%                | 0%                    |

- All **landfilling** and nearly all **Energy from Waste (EfW)** disposal services (93%) utilised by authorities responding to our survey in the W/C 15 March 2021, are reported to be operating as normal. There has been a relatively consistent picture across both waste treatment methods since the W/C 30th March 2020, though EfW has consistently been reported to have a slightly greater level of disruption across the period for reporting. In the previous survey W/C 1 March 2021, 96% reported EfW services to be running as normal.
- **Material Recycling Facilities (MRFs):** 85% of responding authorities report MRF services they utilise to be operating as normal in the W/C 15 March 2021. 11% report minor disruptions to current operations and 4% report moderate disruption. This shows that compared to the previous survey, levels of disruption have increased. In the last survey, 93% reported to be operating normally, with 4% experiencing minor disruption and 4% moderate disruption,
- **Household Waste Recycling Centres (HWRCs):** In the W/C 15 March 2021, all authorities report their HWRCs services to be available. Nevertheless, only 24% of responding authorities report HWRCs to be operating normally, with 62% experiencing minor disruption and 14% moderate disruption. In the previous survey, 31% reported to be operating normally with 59% experiencing minor disruptions and 9% moderate disruptions.
- **Transfer stations:** 93% of transfer station services are reported to operate without any disruption by authorities responding to our survey in the W/C 15 March 2021. This is a decrease from 100% in the W/C 1 March.

- **Mechanical Biological Treatment (MBT):** MBT services are reported to be operating as normal by all responding authorities where this is a disposal service in the W/C 15 March 2021, the same as in the previous survey.
- **Open Windrow Composting (OWC):** OWC services are reported to be operating as normal by 92% of responding authorities in the W/C 15 March 2021, compared to 100% previously. For the first time since the survey restarted in 2021, there are reports of unavailable services (4%, corresponding to one authority).
- All (100%) **In-Vessel Composting (IVC) and Anaerobic Digestion (AD)** services are reported to be in normal operation by LAs responding to our survey in the W/C 15 March 2021; same as in the last survey.

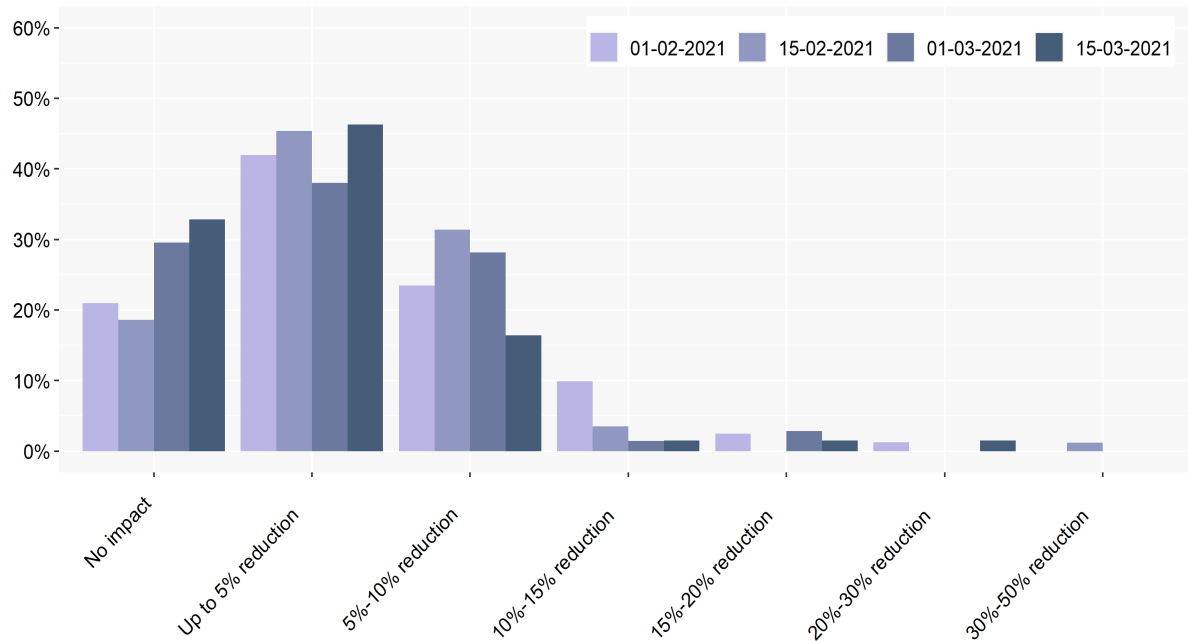


# Disposal: reasons for service changes



- The **effects of social distancing** are the greatest reported cause of disruption to disposal services among responding authorities, reported by 24% in the W/C 15 March 2021. This is a slight decrease from 26% in the previous survey W/C 1 March.
- **Major increases in service demand** was the next highest reported cause for disruption to disposal services, reported by 7% of responding authorities. This is a very slight increase from 6% in the last survey. In the last survey, this factor was the third highest cause for disruption.
- **Staff absence due to self-isolation** was reported by 6% of responding authorities as a cause for disruption to disposal services they provide in the W/C 15 March 2021, down from 11% in the previous survey. In the last survey, this factor was the second highest cause for disruption.
- **Staff absences due to sickness** was highlighted by 5% of responding authorities in the W/C 15 March 2021 as a cause for disruption to disposal services, slightly higher than the percentage reporting in W/C 1 March (4%).

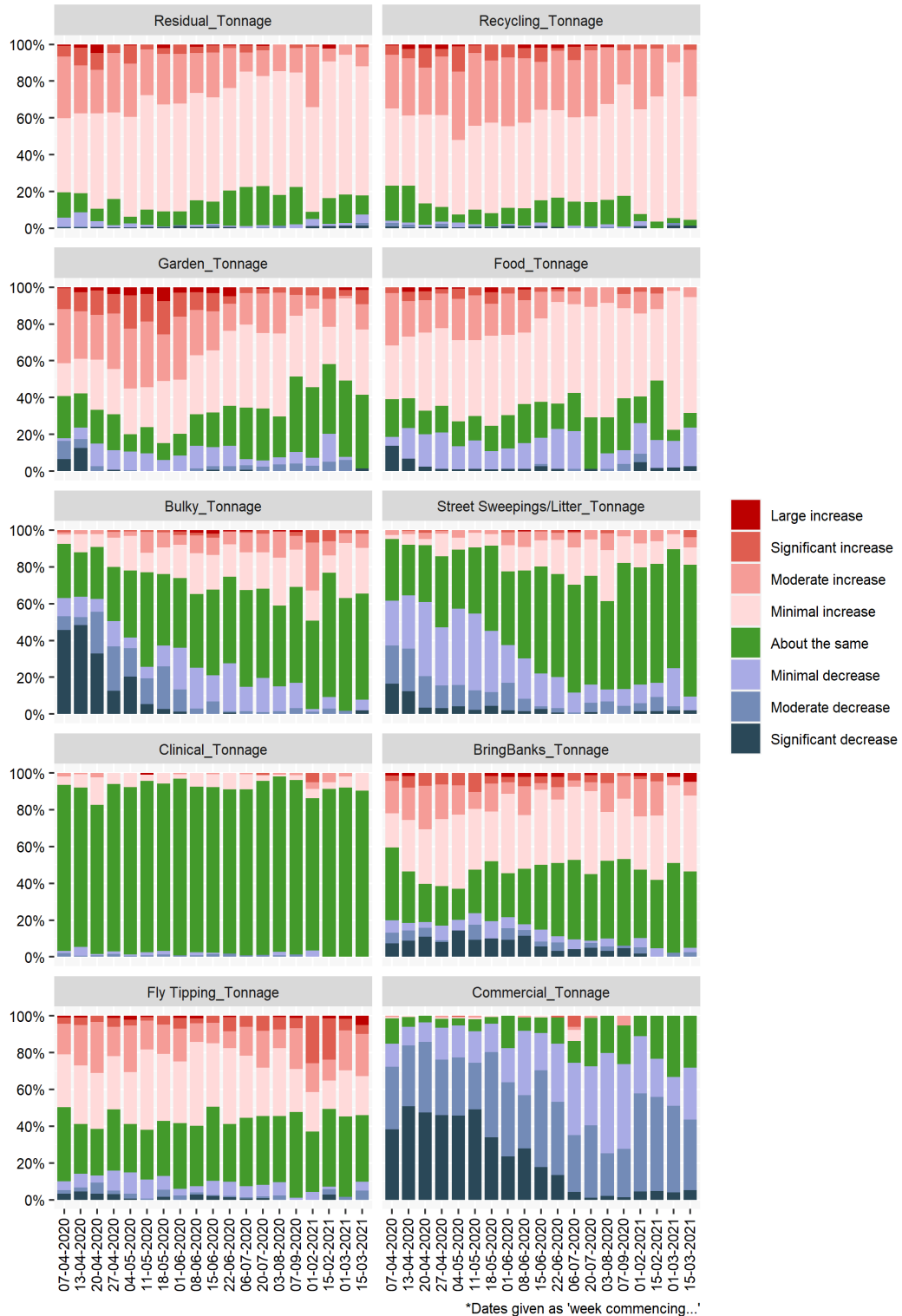
## Staff Absence Levels



- In the W/C 15 March 2021, 33% of responding authorities report experiencing '**no impact**' on operational staffing levels. This figure has increased since the last survey W/C 1 March (29%). This means that 67% are experiencing impacts on staffing levels, compared to 71% in the W/C 1 March, 81% in the W/C 15 February and 79% in the W/C 1 February.
- 46% of respondents report an '**up to 5% reduction**' in the W/C 15 March. This is higher than the 38% reported in the previous survey W/C 1 March.
- 16% report a '**5%-10% reduction**', which is down from 28% in the previous survey. Only 3% report a '**10%-30% reduction**'.

# Changes in Waste Arisings (excluding withdrawn services)

## Waste arisings: comparison to previous weeks <sup>i</sup>



## Waste arisings: most recent week

|                             | +100% increase | 50-100% increase | 20-50% increase | 0-20% increase | No impact | 0-20% decrease | 20-50% decrease | 50-100% decrease |
|-----------------------------|----------------|------------------|-----------------|----------------|-----------|----------------|-----------------|------------------|
| Residual                    | 0%             | 1%               | 10%             | 70%            | 10%       | 4%             | 1%              | 1%               |
| Recycling                   | 0%             | 3%               | 25%             | 67%            | 3%        | 0%             | 0%              | 1%               |
| Garden                      | 2%             | 8%               | 14%             | 35%            | 40%       | 0%             | 0%              | 2%               |
| Food                        | 0%             | 0%               | 5%              | 63%            | 8%        | 21%            | 0%              | 3%               |
| Bulky                       | 0%             | 2%               | 8%              | 25%            | 58%       | 6%             | 0%              | 2%               |
| Street Sweepings/<br>Litter | 0%             | 4%               | 6%              | 9%             | 72%       | 8%             | 0%              | 2%               |
| Clinical                    | 0%             | 0%               | 0%              | 10%            | 90%       | 0%             | 0%              | 0%               |
| Bring Banks                 | 5%             | 0%               | 7%              | 41%            | 41%       | 2%             | 2%              | 0%               |
| Fly Tipping                 | 5%             | 5%               | 23%             | 21%            | 36%       | 5%             | 5%              | 0%               |
| Commercial                  | 0%             | 0%               | 0%              | 0%             | 28%       | 28%            | 38%             | 5%               |

- Residual:** The percentage of authorities reporting residual tonnages to be ‘about the same’ (or ‘no impact’) has fallen. In the W/C 15 March, this was reported by 10% of authorities, compared to 15% in the W/C 1 March. Over four in five (81%) authorities represented in our survey, report higher than usual residual waste tonnages, at similar levels to the previous survey (82%).
- Recycling:** A large majority (95%) of authorities responding to our survey in the W/C 15 March 2021, report recycling waste tonnages to be greater than usual, the same figure as the previous survey (95%). Only 3% report no impact. Two thirds (67%) of authorities report increases in tonnages to be in the region of ‘0-20% greater than normal’, while 25% report increases to be in the region of ‘20-50% greater than usual’. This compares to 85% and 10% respectively, reported in the last survey.
- Around two in five authorities (40%) report **garden waste** tonnages to be ‘about the same’ as typical in the W/C 15 March 2021. This is a slight decrease from 42% in the previous survey. Greater than usual levels of garden waste tonnages are reported by 59% of responding authorities. To compare, 52% reported garden waste tonnages to have increased in the W/C 1 March 2021.
- Just 8% of authorities report **food waste** tonnages to be ‘about the same’ as typical. This is a similar level compared to the 6% reported in the previous survey. Greater than usual levels of food waste tonnages are reported by 68% of responding authorities, with the majority being ‘increases of 0 to 20%’. This is down from 78% in the previous survey. In total 24% report a decrease, compared to 16% in the previous survey.

- Three in five (58%) of authorities in the W/C 15 March 2021 report **bulky waste** collected tonnages to be 'about the same', while 35% report greater than typical bulky waste collection tonnages. This is similar to the last survey, when 61% reported no impact and 37% reported higher levels of bulky waste.
- **Street sweepings/ Litter:** 72% of responding authorities report no impact on street sweeping/litter tonnages, an increase from 65% in the last survey. Of those remaining, 10% report lesser than usual tonnages and 19% report higher levels. This compares to 25% lower levels and 10% higher levels in the last survey.
- Nine out of ten authorities (90%) report collected **clinical waste** arisings to be at a similar level to usual. This percentage is similar to the level reported in the previous survey (92%). The remainder report a 0-20% decrease.
- 41% of LAs in the W/C 15 March 2021 report waste arisings to be about the same from **bring banks**. This is a decrease from 49% in the previous survey (W/C 1 March). In total, 53% report greater than typical levels of collected waste. This is an increase compared to the greater than normal levels reported in the last survey (48%).
- **Fly-tip clearance:** Over half of responding authorities (54%) in the W/C 15 March 2021, report greater than usual tonnages of collected fly-tipped waste. This is a similar level to the 55% reported in the previous survey. 36% experienced levels to be 'about the same', which is lower than the 44% last reported.
- **Commercial:** In total 71% of responding authorities highlight a lesser-than-usual level of collected commercial waste tonnages, up from 67% in the W/C 1 March. A lower percentage of authorities (28%) report tonnages of commercial waste to be 'about the same as usual', compared to 33% in the last survey.

---

<sup>i</sup> The chart comparing changes to waste arising to previous weeks includes the following categories:

Large increase = +100% increase

Significant increase = 50-100% increase

Moderate increase = 20-50% increase

Minimal increase = 0-20% increase

About the same = No impact

Minimal decrease = 0-20% decrease

Moderate decrease = 20-50% decrease

Significant decrease = 50-100% decrease