

Communities and Infrastructure

Prepared by Stuart Hayward-Higham, Technical Development
Director for SUEZ

recycling and recovery UK

ADEPT Spring Conference

ready for the resource revolution



What are we?

UK resource and waste sector
social, economic and environmental contribution



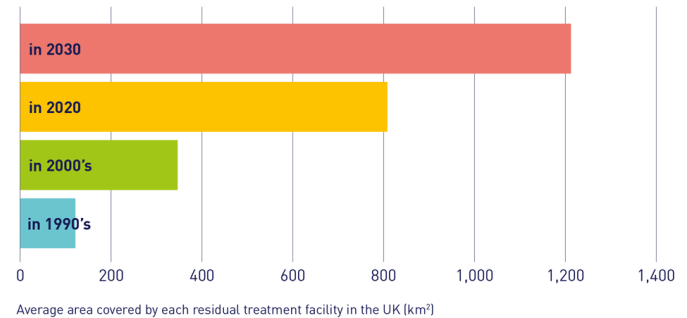
What does that mean?

UK resource and waste sector
social, economic and environmental contribution



Locally embedded jobs
Training new staff, new training facilities / courses
Improving local environments
Locally embedded solutions (reuse)
Regional infrastructure (what and where)
Investing in local communities

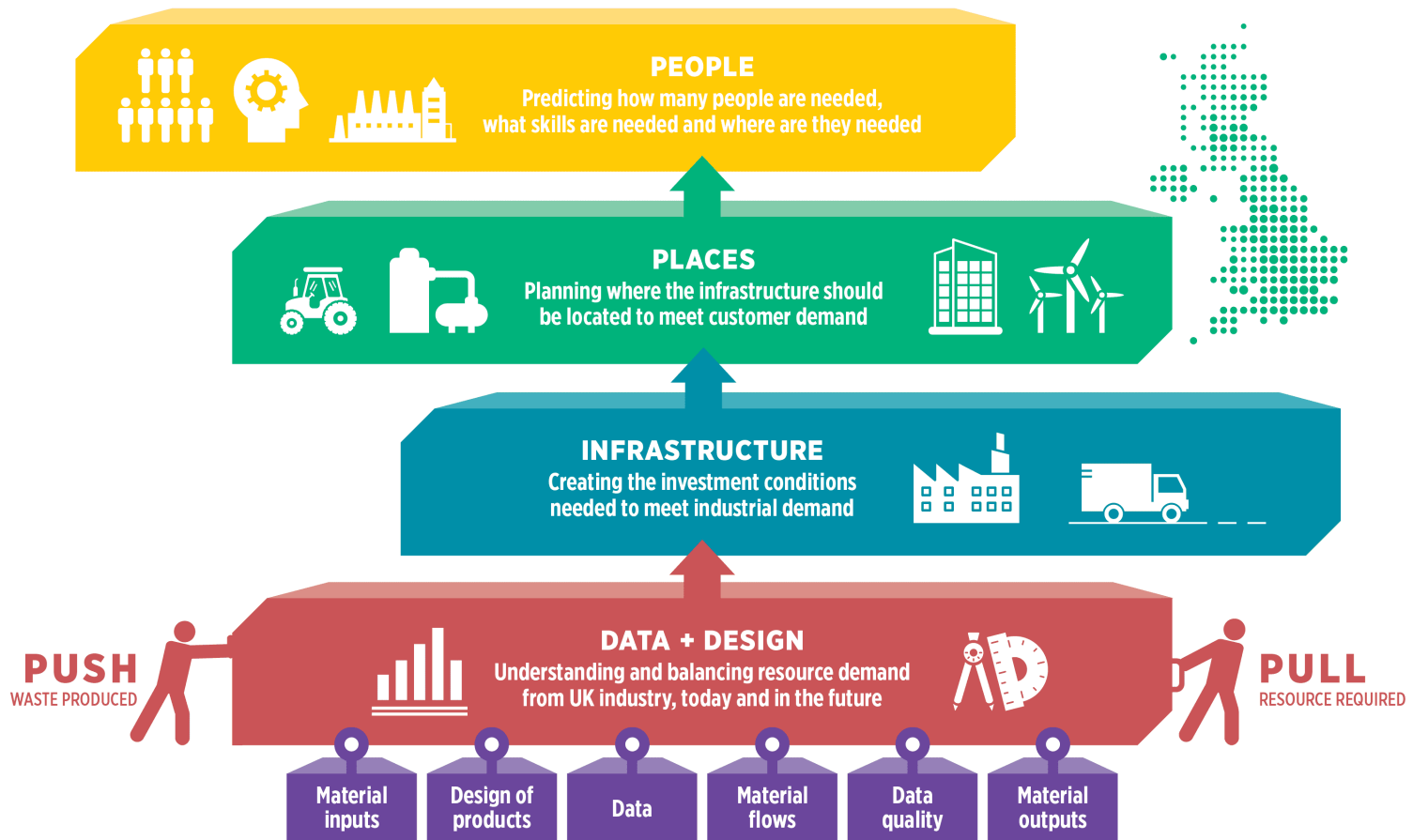
↓ AREA COVERAGE FOR RESIDUAL TREATMENT FACILITIES – 1990'S TO 2030



A combined effort

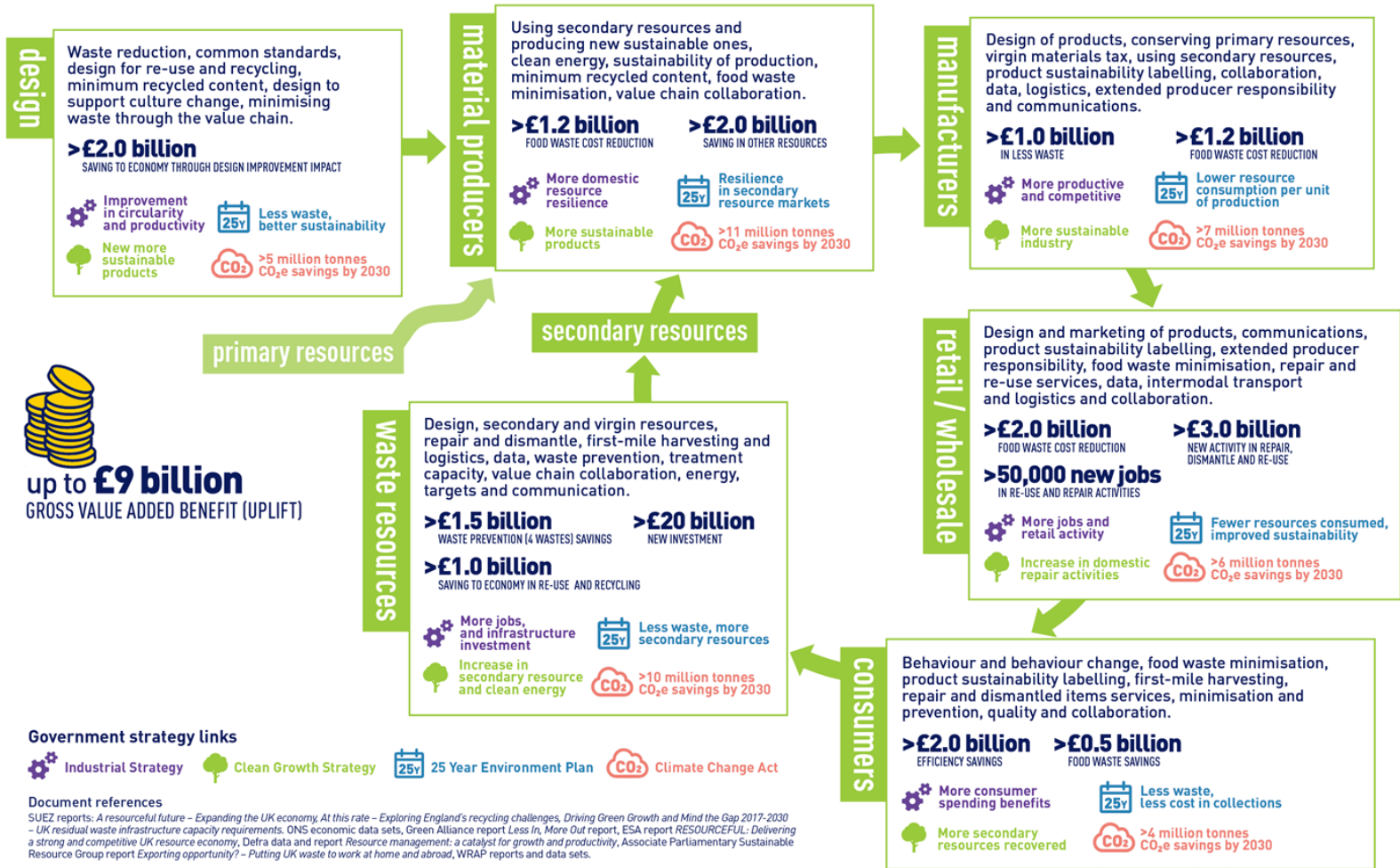
UK resource and waste sector deal

Delivering the transition to a resource-efficient UK economy

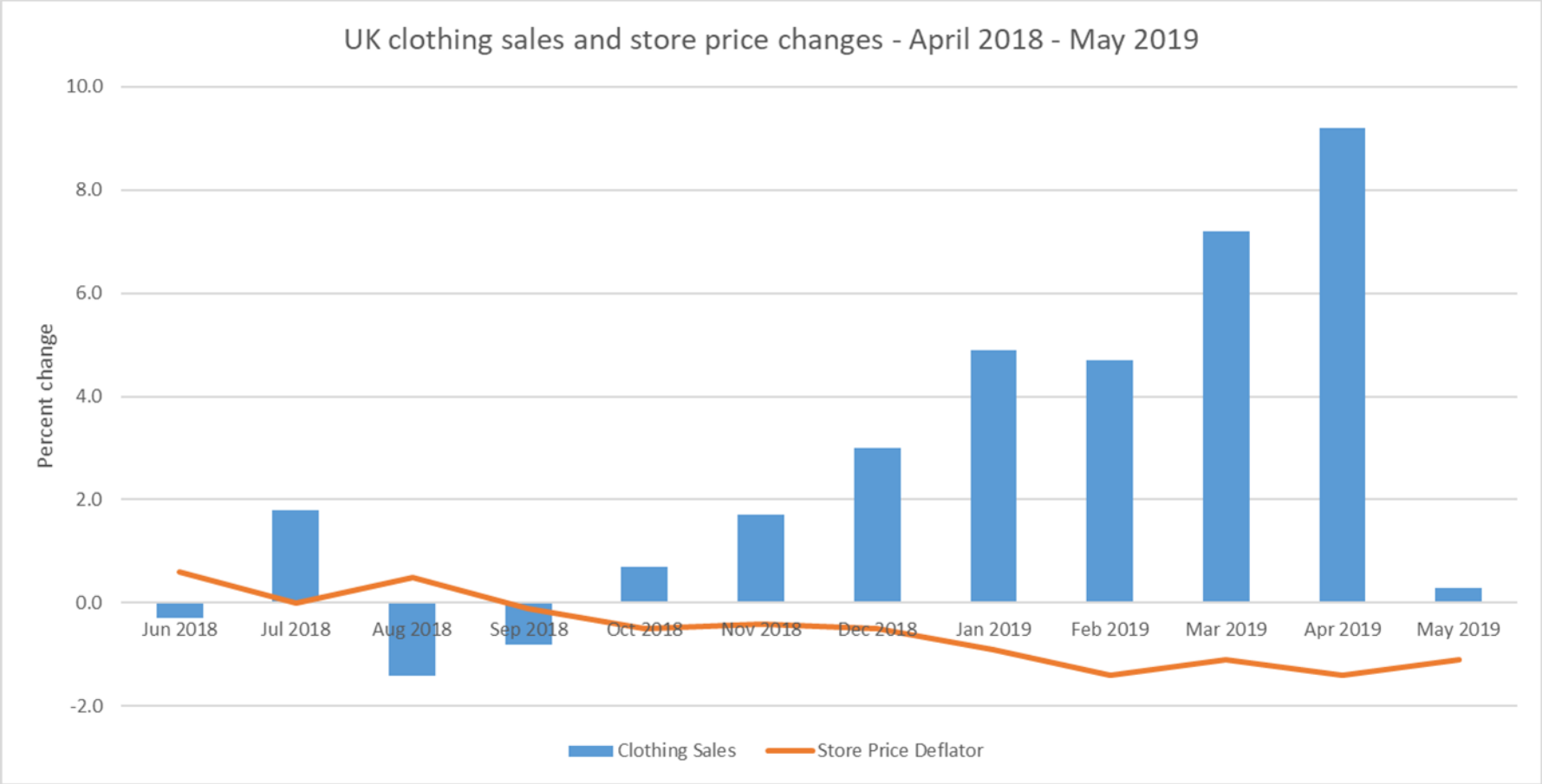


Our benefits

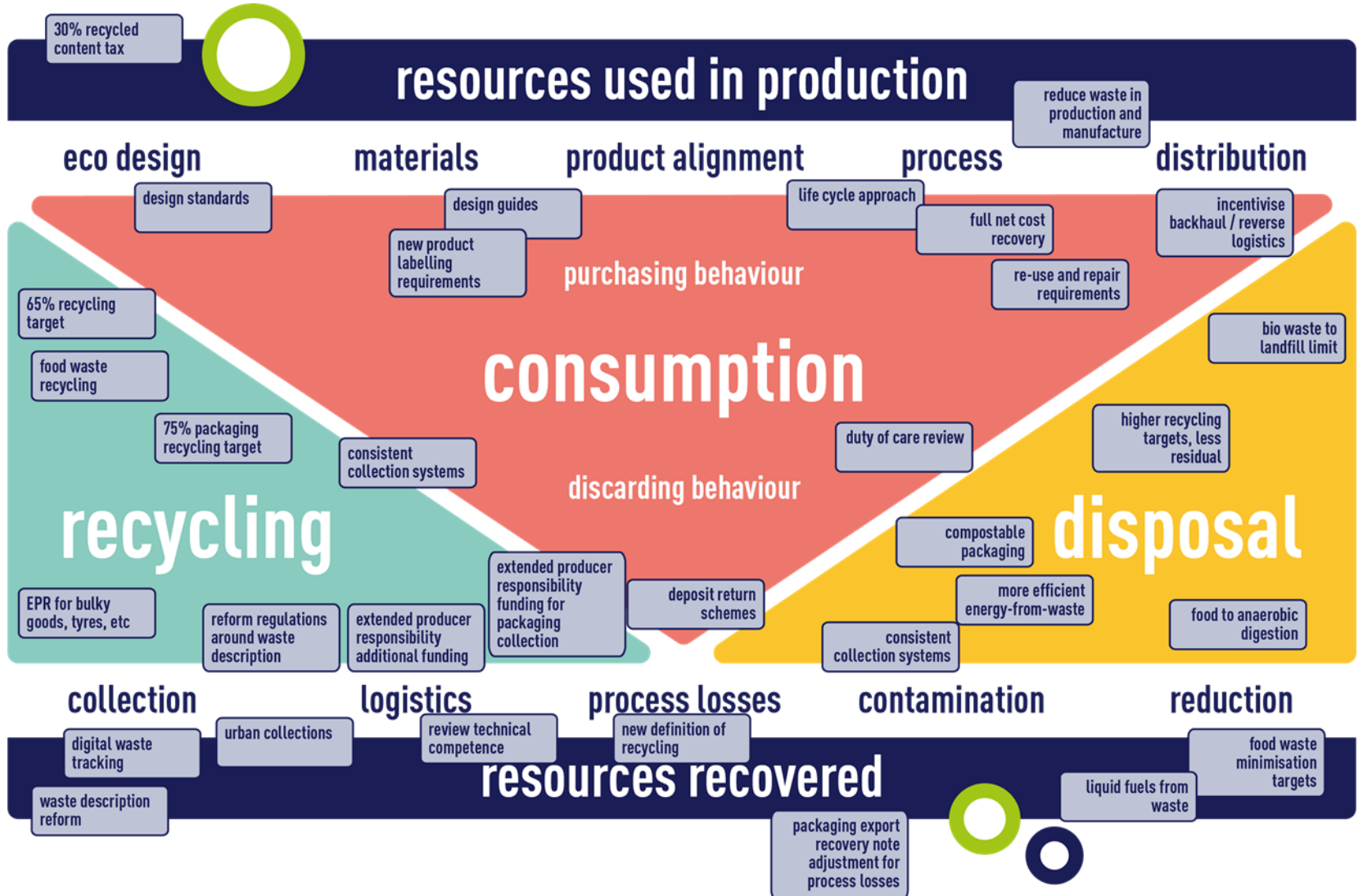
How a well-designed resources and waste strategy can support the economic value chain



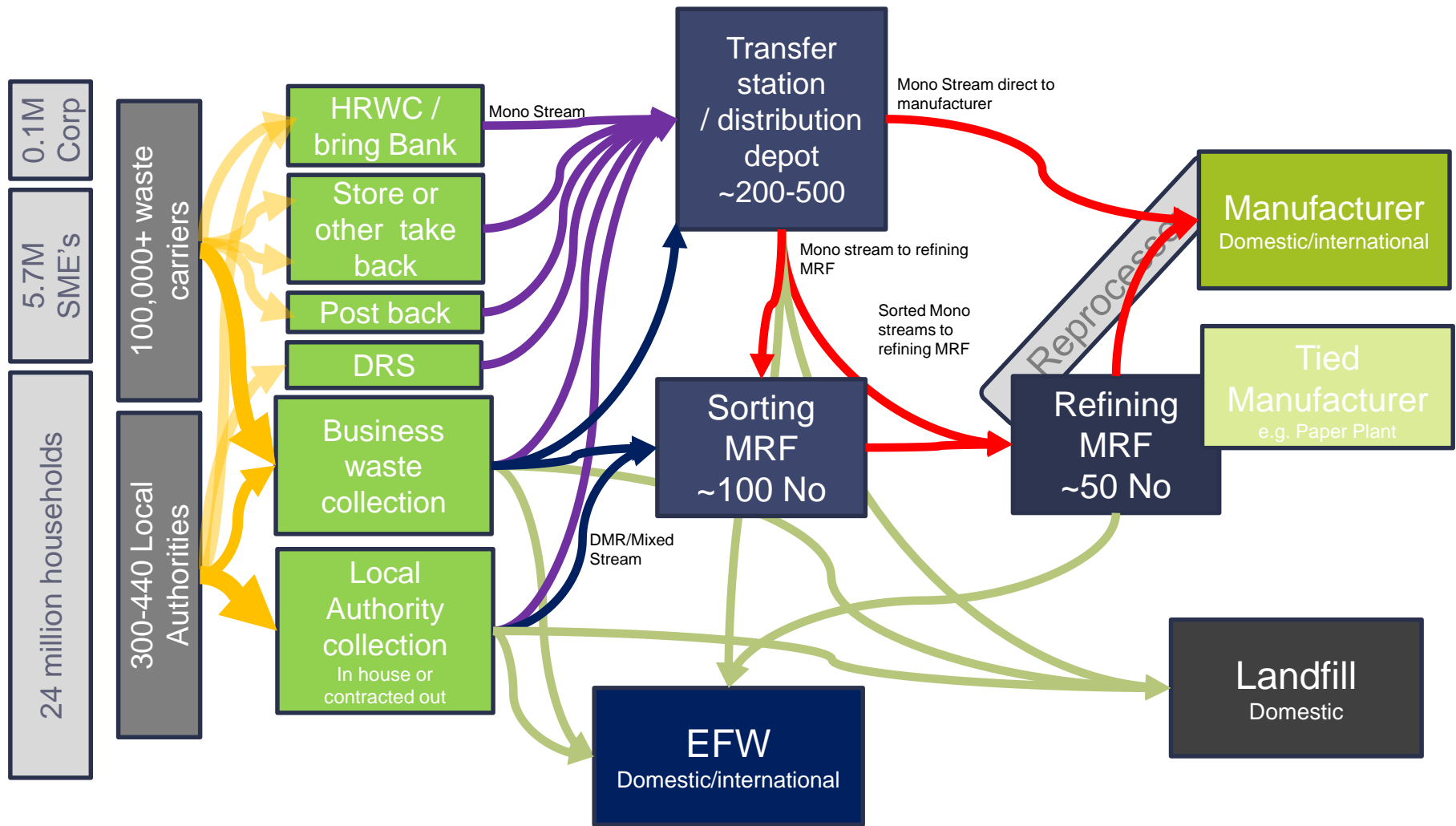
Wider issues | need to deal with the big issues



policy | lots of changes but not complete coverage



System | need to work together in new ways



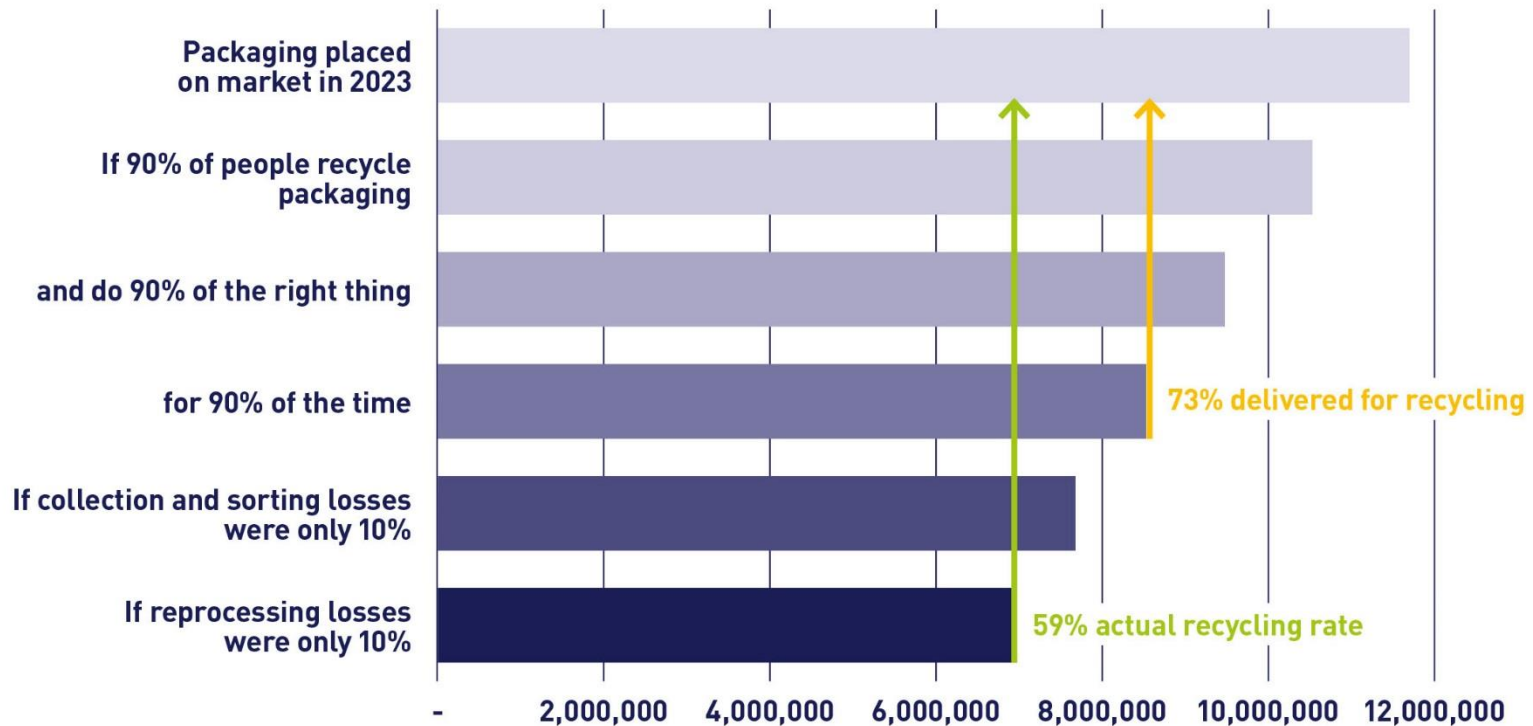
Systems | across the whole value chain



↑ MATERIALS AND PRODUCTS HEADLINE VALUE CHAIN

Systems | collaborative action is the key

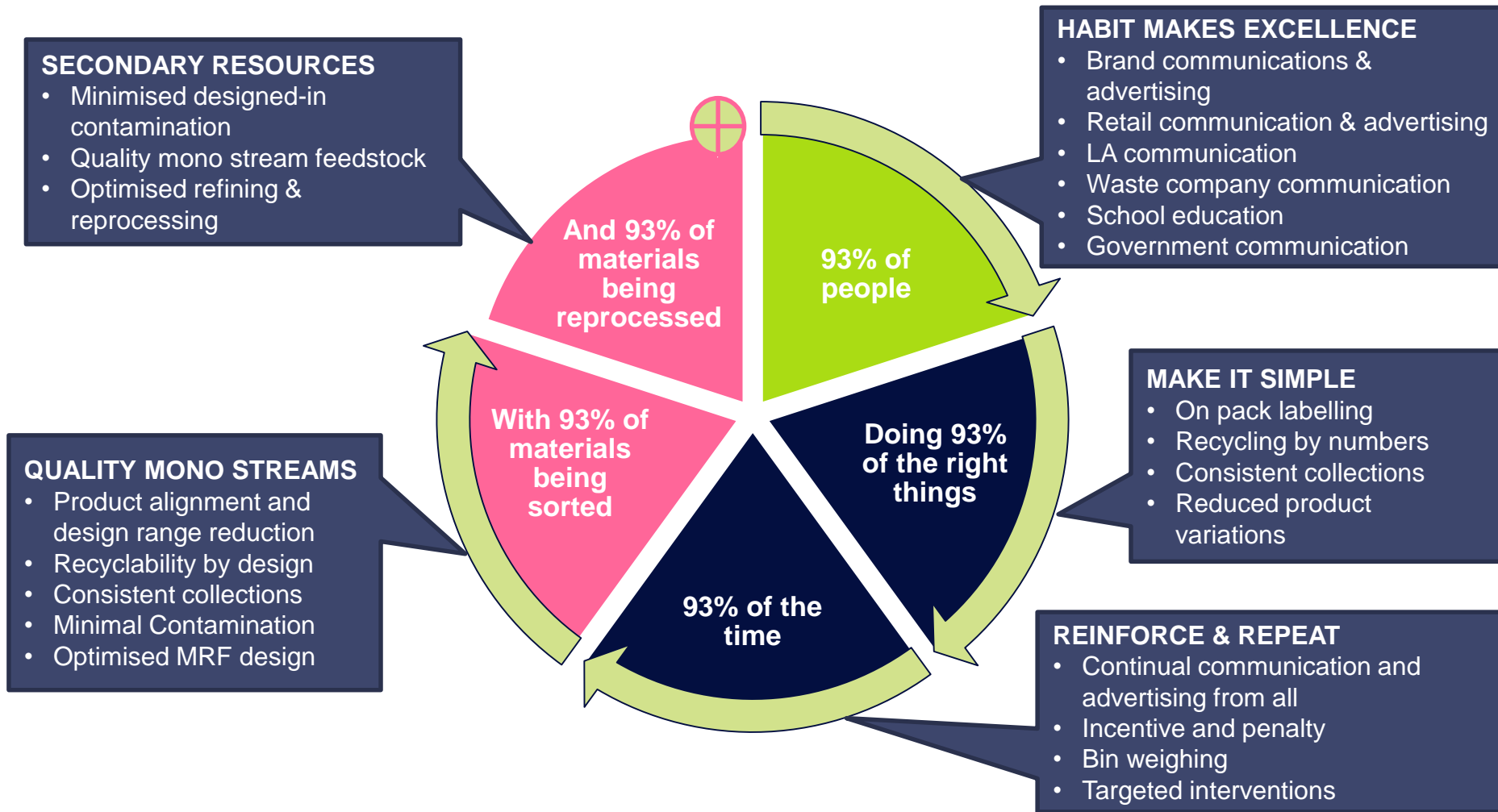
The need for full value chain collaboration to recycle packaging (excellent performance)



© SUEZ recycling and recovery UK

However, 5 x 90% efficiency will give a recycling rate of 59%

Systems | what does collaboration mean?



To get to 70% packaging recycled we need 5 x 93% efficiency

So What ?

- **New world of working together better or failing to deliver**
- **New relationships, new partners (DRS!), new systems and new structures**
- **A blended mix of national, regional and local solutions, but local look and feel important for the delivery of the goals (the 5x90's)**

End

Stuart Hayward-Higham
Technical Development Director